

## What a great way to spend a fall weekend

Every year when I preview entries for the Parade of Homes, I think the plans and décor just can't get any better — and each year I come away amazed at the clever and creative ways builders and decorators present these models.

On an early tour, you'll find painters scrambling to finish, or perhaps pictures propped against the wall. But the rich color tones, the opulent draperies, the cushy furnishings, the fabulous finishing touches and the flowing floor plans all make it worth taking time to tour these houses.

From now through Oct. 21st, take a day or two to tour some of the 158 homes on Parade. The market has slowed a bit, so there are even more homes to consider. It's still a buyer's market with attractive mortgage rates. Explore the many incentives offered by builders, some of which are as creative as the décor!

— **CLISSA S. ENGLAND, EDITOR**

**EDITOR'S NOTE:** On Sunday, Oct. 7, the Richmond Times-Dispatch will have the latest edition of Parade of Homes magazine, which will include a listing of the **Winning Entries** including **Gold & Silver Awards**.

**Listing Information:** In the listings for the 158 Parade entries, the **F** symbol in the text means that the house is a furnished model.

**Map Information:** On the map at left, each entry on the Parade of Homes is numbered according to where it is located. The chart below shows how many entries are in each area, and the numbers used for the entries.

County/City	Total entries	Map numbers
Goochland	4	1-4
Louisa	2	5-6
Henrico	36	7-42
Hanover	19	43-61
King William	2	62-63
New Kent	12	64-75
Hopewell	3	76-78
Dinwiddie	1	79
Chesterfield	68	80-147
Powhatan	6	148-153
Richmond	5	154-158

### Times-Dispatch Information:

#### SPECIAL NEWS SECTIONS

**Editor:** Clissa England, (804) 649-6835, cengland@timesdispatch.com

**News Editing:** Hew Stith, Sandra H. Walsh

**Art Director:** Tom Bond, (804) 649-6015, tbond@timesdispatch.com

**Prepress Design Services:** Robert J. Shufflebarger, George G. Hunt Jr. and Matthew R. Segreto, project coordinator

**Ad Coordinator:** Casey Martin, (804) 775-8153, cmartin@timesdispatch.com

**Advertising:** Lydia L. Sartori, supplementary products coordinator, (804) 649-6167, lsartori@timesdispatch.com. After Oct. 7, all information is available online at [www.inRich.com](http://www.inRich.com) (at the bottom of the home page click on Special Publications, then Parade of Homes.)



### 1 Stephen Thomas Homes Hillside Estates

\$599,950 | 3,265 sq. ft. | Goochland County

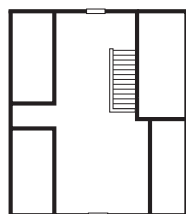
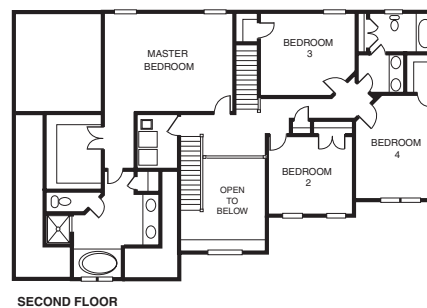
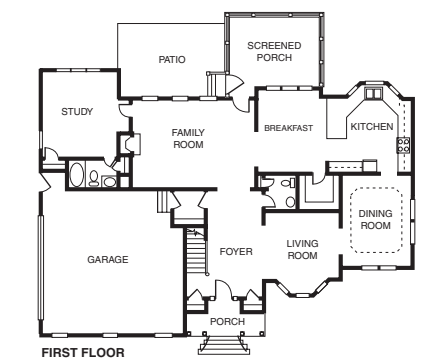
The graceful 4-bedroom, 3½-bath Ashton II features a two-story foyer, airy kitchen and breakfast nook, first-floor study with full bath and a beautiful dining room with recessed ceiling. The large family room with gas fireplace is the perfect place to unwind at the end of the day.

**Directions:** Patterson Avenue west from Route 288; proceed 3-4 miles and turn right into Manakin Farms (directly across from Luck Stone); proceed through to Hillside Estates; follow the Parade of Homes signs.

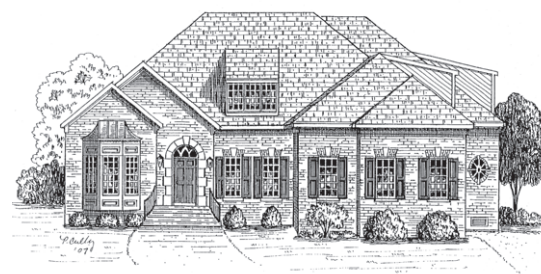
**Builder Contact:** Linda Pearman, (804) 672-6806

**Agent Contact:** Jackie Crouch, (804) 727-2341, Coldwell Banker

[www.stchomes.com](http://www.stchomes.com)



THIRD FLOOR



### 2 Boone Homes Inc. Coach Homes at Kinloch

\$719,950 | 4,306 sq. ft. | Goochland County

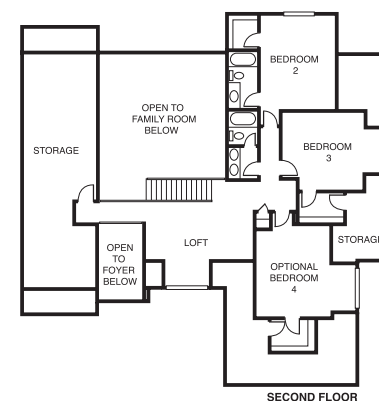
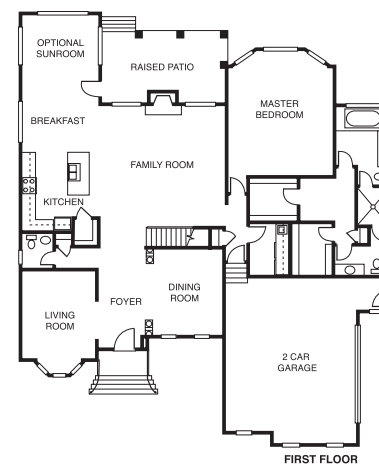
New luxury homes starting in the \$600s adjacent to two of Richmond's finest country clubs; located in eastern Goochland County close to Route 288 and Interstate 64. All brick homes, well-appointed kitchens and lavish his and her master bathrooms. Airy sunroom and sun-drenched raised brick verandas. Yards maintained. **F**

**Directions:** From 288 take the Tuckahoe Creek Parkway West (Route 740) exit; follow Tuckahoe Creek Parkway past the entrance to Capital One; cross Route 623 and continue on Tuckahoe Creek Parkway for 0.7 miles to Long Pond Road which will be the next left after Kinloch Road; turn left onto Long Pond Road, then right onto Hill Grove Road; model home will be directly ahead on the right.

**Builder Contact:** Hal Hamner, (804) 218-7762

**Agent Contact:** Sandy Kottcamp, (804) 708-5125, Boone Homes Realty

[www.boonehomes.net](http://www.boonehomes.net)



SECOND FLOOR