



3 Eagle Construction of Va. LLC
The Park at Centerville

\$515,018 | 2,711 sq. ft. | Goochland County

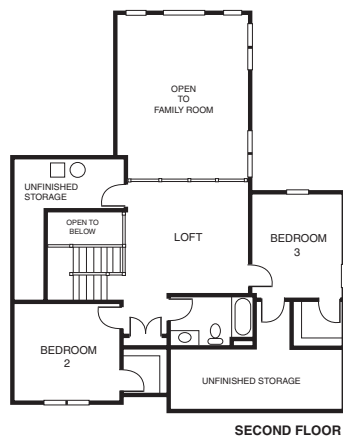
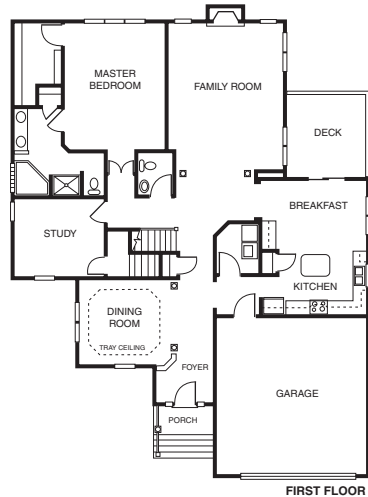
The Parke at Centerville features distinctive low-maintenance residences. The designs are light and airy, filled with natural light. The foyers soar two stories high. There are hardwood floors in the dining room, living room, foyer and kitchen. Perfect for first-floor living with spacious first-floor master suite. Upstairs, there are 2 or 3 bedrooms, or an optional loft. Plus, there are two-car garages. **F**

Directions: From Route 288, take Broad Street Road West Exit (Route 250); follow Broad Street Road approximately two miles and turn left onto Hockett Road (Route 623).

Builder Contact: Pam Nelson, (804) 741-4663

Agent Contact: Ginny Prudhoe, (804) 382-1516, Jeannette Mack, (804) 382-2220, Eagle Construction of Va. LLC

www.eagleofva.com



4 Tomac Corp.
Bellview Gardens

\$512,195 | 3,270 sq. ft. | Goochland County

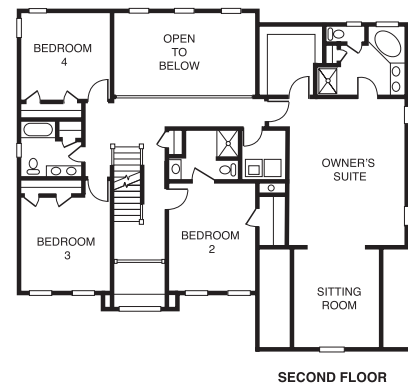
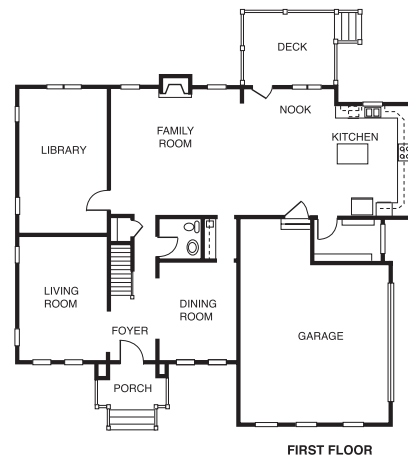
The "Monarch" is a spacious and luxurious executive home with city conveniences in a country setting. Gracious formal rooms plus a butler's pantry, an inviting first-floor library and two-story family room make this home ideal for entertaining. The second floor features 4 spacious bedrooms and 3 full baths. A third level is finishable. Homes starting in the high \$400s.

Directions: From Route 288, take the Broad Street Road West Exit; travel approximately 1 mile; turn right onto Mills Road into subdivision; turn right onto Pamela Lane and home will be on the right.

Builder Contact: Becky Hatch, (804) 794-4534

Agent Contact: Scott Dunn, (804) 405-8155, Joyner Fine Properties

www.tomachomes.com



5 Prospect Homes
Spring Creek

\$699,950 | 4,399 sq. ft. | Louisa County

The Hampton has a free-flowing open plan with a first-floor master. The exterior curb appeal is accomplished using Dryvit accents as well as quoins. Twelve-foot ceilings grace the foyer, family room, dining room and kitchen area. The finished basement makes this a very desirable plan. Spring Creek, a gated golf course community, is priced from \$300s+. **F**

Directions: Take I-64 west (toward Charlottesville) to the Palmyra/Gordonsville Exit 136; go north on Route 15 for 1.2 miles; Spring Creek will be on the left; go through security gate and bear right on Bear Island Parkway.

Builder Contact: Sam Tarbona, (804) 965-9700

Agent Contact: Steven Just and Zach Price, (540) 832-1516, Prospect Homes

www.prospecthomes.com

