



**6 Prospect Homes**  
Spring Creek

\$293,955 | 1,519 sq. ft. | Louisa County

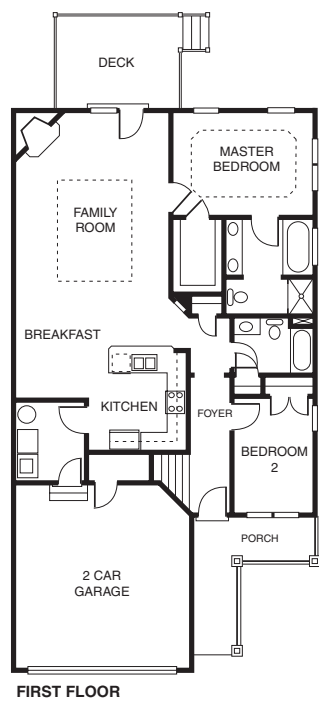
The Stafford is a villa-style home perfect for those looking to downsize and still have all the amenities of a larger home in a gated golf course community. The interior is characterized by an open floor plan, accented with vaulted ceiling and spacious bedrooms. Stone accents and a two-car garage make these villas a viable offering for those looking for luxury and practicality. Villas from the \$270s.

**Directions:** Take I-64 West (toward Charlottesville) to the Palmyra/Gordonsville Exit 136; go north on Route 15 for 1.2 miles; Spring Creek will be on the left; go through security gate and bear right on Bear Island Parkway.

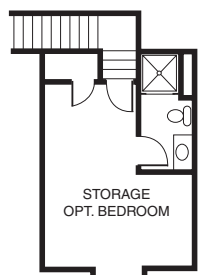
**Builder Contact:** Sam Tarbona, (804) 965-9700

**Agent Contact:** Zach Price and Steven Just, (540) 832-1516, Prospect Homes

[www.prospecthomes.com](http://www.prospecthomes.com)



FIRST FLOOR



SECOND FLOOR



**7 Orleans Homebuilders**  
Raleigh

\$1,712,500 | 7,461 sq. ft. | Henrico County

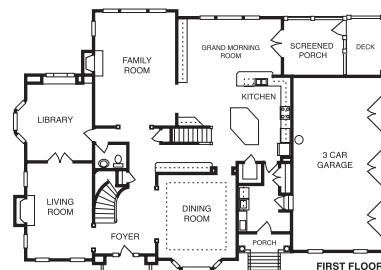
The first floor features a two-story family room, oversize living room and dining room, study, kitchen, morning room and all-season screened porch; two stairways go to the second floor and the owner's suite with his and her baths and sitting area, 3 other bedrooms and a loft. The third floor is finished as a youthful retreat. The finished basement provides open space and a bar area with wine closet. **F**

**Directions:** Off River Road to Sleepy Hollow Road just west of Parham; first house on the right.

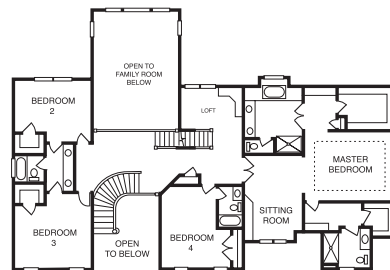
**Builder Contact:** Betty O'Neill, (804) 323-3100, ext. 201

**Agent Contact:** Jamie Younger, Lynn Thomas and John Vandersyde, (804) 282-7300, Virginia Properties

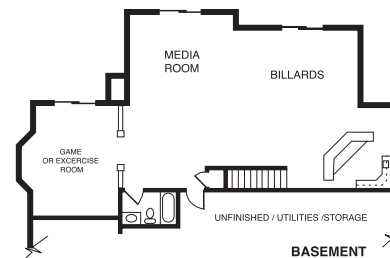
[www.orleanshomes.com](http://www.orleanshomes.com)



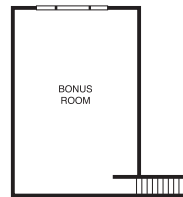
FIRST FLOOR



SECOND FLOOR



BASEMENT



FINISHED ATTIC



**8 Gumenick Properties**  
Grayson Hill

\$720,365 | 3,600 sq. ft. | Henrico County

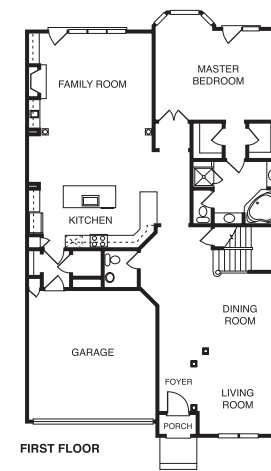
The Farrington offers the perfect blend of charm and sophistication, featuring formal and informal spaces. The first floor also features a family room, a study, living room and a dining room, all with 10-foot ceilings. The kitchen features ample counter space and a breakfast room. The second floor loft could be an office or exercise space. An optional master suite is available on the first floor. **F**

**Directions:** Grayson Hill is on the southeast corner of Patterson Avenue and Gaskins Road; turn right at clubhouse, then left on Tilbury Lane.

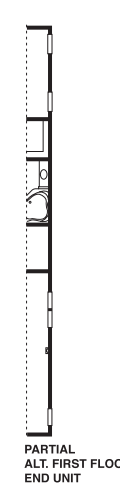
**Builder Contact:** Ollin Toler, (804) 285-7275

**Agent Contact:** Karen Hofheimer, (804) 750-1870, Gumenick Properties

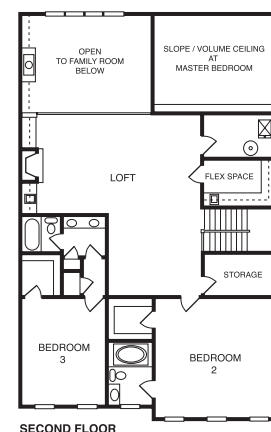
[www.graysonhill.com](http://www.graysonhill.com)



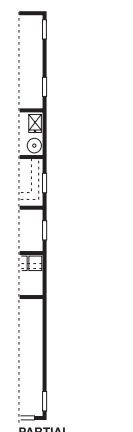
FIRST FLOOR



PARTIAL ALT. FIRST FLOOR END UNIT



SECOND FLOOR



PARTIAL ALT. SECOND FLOOR END UNIT