



12 Youngblood Properties LLC Falcon Rest

\$879,000 | 4,310 sq. ft. | Henrico County

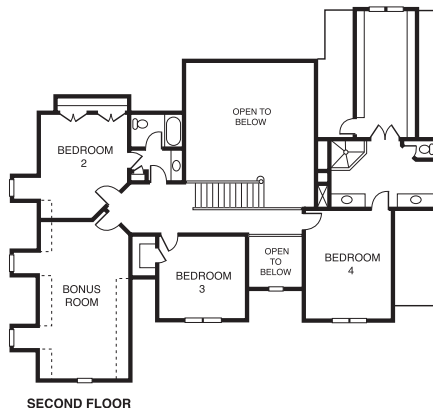
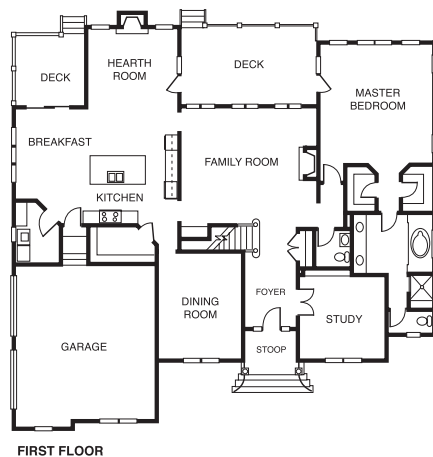
Elegant and spacious describe this all brick "Courtney II," which features a cook's kitchen with oversize island and super-size pantry. Kitchen has granite tops and stainless appliances and is open to the breakfast area and a cozy hearth room with stone fireplace. This house has first- and second-floor master suites with spa-like luxury baths; there are 2 more bedrooms upstairs plus a full bath and a finished bonus room or fifth bedroom. More can be finished on the third floor. Homes from the mid \$700s; 15 lots available.

Directions: From Short Pump, go 3 miles south on Pump Road; turn right onto Falconbridge Drive into subdivision. New homes on the right.

Builder Contact: Nancy Youngblood, (804) 746-5465

Agent Contact: Scott Dearnley, (804) 938-5277, Joyner Fine Properties

www.falcon-rest.com



13 D.O. Allen Homes Inc. Church Road Commons

\$523,675 | 3,106 sq. ft. | Henrico County

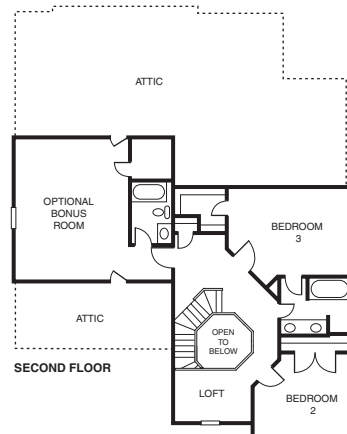
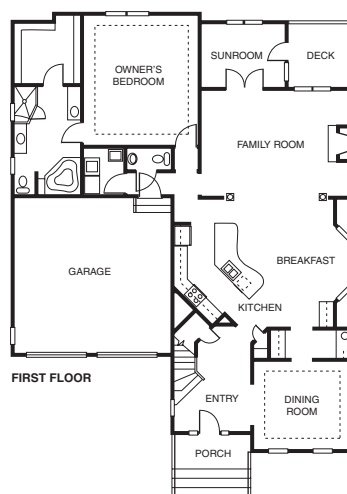
The Winterberry is a maintenance-provided home in an intimate neighborhood. The entry foyer displays an octagonal oak staircase. The formal dining room connects to the gourmet kitchen through a butler's pantry. The first-floor owner's suite features a soaking tub, shower, walk-in closet and separate vanities. A gathering room and sunroom complete the first floor. The second floor features a loft area, 3 bedrooms and 2 full baths. **F**

Directions: From Short Pump, go south on Pump Road; at Church Road, turn right, and Church Road Commons will be 0.6 miles ahead on the right.

Builder Contact: Laura Tischler, (804) 364-4636

Agent Contact: Laura Tischler, (804) 364-4636, D.O. Allen Homes, Inc.

www.doallenhomes.com



14 Youngblood Properties LLC Covey Run

\$619,750 | 3,193 sq. ft. | Henrico County

The Atkins features a first-floor master suite, decorative tiled luxury bath with granite tops and jetted tub. This home boasts a two-story foyer with turning staircase, a gourmet kitchen with stainless appliances, granite tops, tile backsplash and ample hardwood flooring. Quality construction can be found throughout our newest neighborhood, including tankless water heaters, conditioned crawl spaces and much more.

Directions: From Short Pump, go south on Pump Road approximately 1 mile to Church Road; turn right on Church Road; go about 1,000 feet; turn left into subdivision. Model is on left.

Builder Contact: Nancy Youngblood, (804) 746-5465

Agent Contact: Scott Dearnley, (804) 938-5277, Joyner Fine Properties

www.covey-run.com

