



**15 Prospect Homes**  
Three Notch Place

\$499,950 | 3,017 sq. ft. | Henrico County

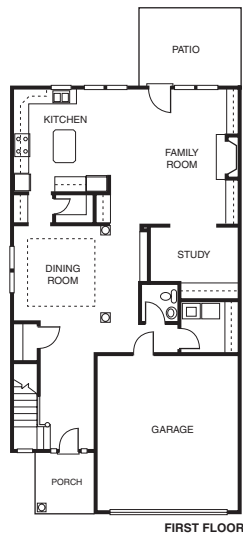
The Winchester is a prime example of a luxury town home. Four-side brick exteriors with copper accents, paver driveways, walks and patios. Sod and irrigation surround the home. Wide plank flooring, granite counters, five-member crown molding and stainless kitchen appliances. Homes from the \$400s. **F**

**Directions:** At Pump and Three Chopt roads, just south of Short Pump.

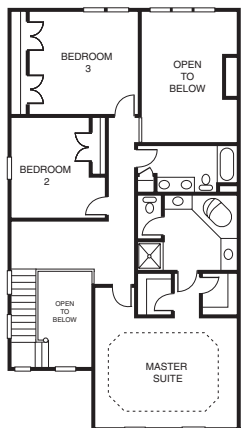
**Builder Contact:** Sam Tarbona, (804) 965-9700

**Agent Contact:** Pam McGeorge, Floyd Sinkler, (804) 364-1185,  
Prospect Homes

www.prospecthomes.com



FIRST FLOOR



SECOND FLOOR



**16 Gumenick Properties**  
Monument Square

\$635,000 | 2,566 sq. ft. | Henrico County

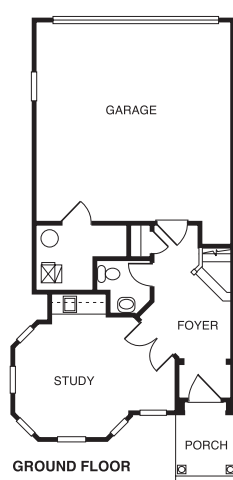
The Robinson's Victorian turret spans three floors, allowing natural light to pour inside. This home has 3 bedrooms, 3½ baths, two-car garage, a well-equipped kitchen, a laundry and combined living and dining rooms. Its uniqueness also is reflected in its lower breakfast nook, loft, deck and roof terrace. The Robinson offers several floor plans. **F**

**Directions:** From I-64, take the Glenside South exit; follow to Monument Avenue; turn left; Monument Square is ahead on the right.

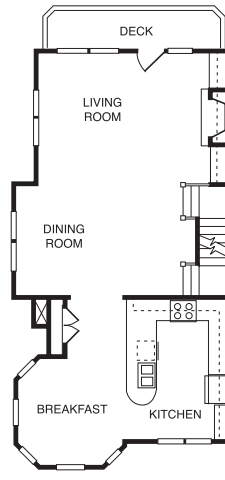
**Builder Contact:** Ollin Toler, (804) 285-7275

**Agent Contact:** Sandra Moss, (804) 288-2680,  
Gumenick Properties

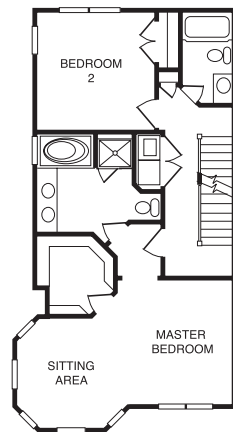
www.monumentstyle.com



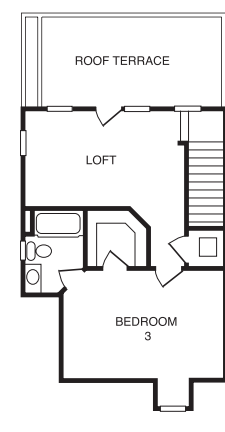
GROUND FLOOR



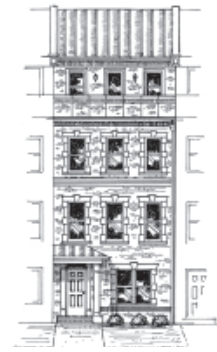
SECOND FLOOR



THIRD FLOOR



LOFT



**17 Gumenick Properties**  
Monument Square

\$585,523 | 2,400 sq. ft. | Henrico County

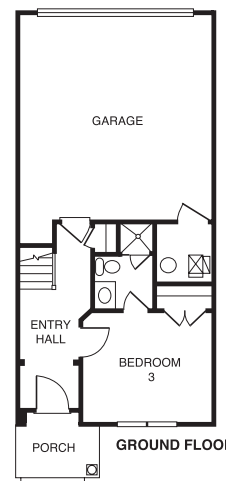
The Linden is a spacious 3½-story home that boasts 3 bedrooms, 3 full baths and a powder room, plus a two-car garage. Unique flourishes include a loft, walk-in closets, fireplace, rear deck and front roof terrace. The breakfast room, kitchen and living and dining areas share the second floor, providing a place for friends and family to gather. The Linden offers several floor plan options.

**Directions:** From I-64, take the Glenside South exit; follow to Monument Avenue; turn left; Monument Square is ahead on the right.

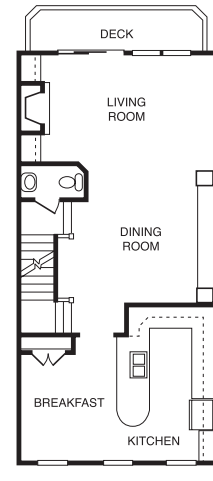
**Builder Contact:** Ollin Toler, (804) 285-7275

**Agent Contact:** Sandra Moss, (804) 288-2680,  
Gumenick Properties

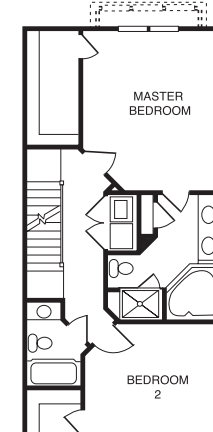
www.monumentstyle.com



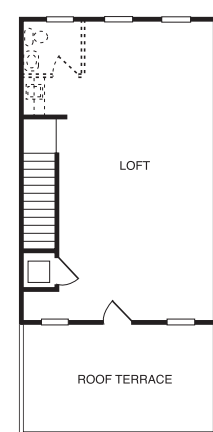
GROUND FLOOR



SECOND FLOOR



THIRD FLOOR



LOFT