



## 18 Ryan Homes Bentley

\$745,000 | 5,052 sq. ft. | Henrico County

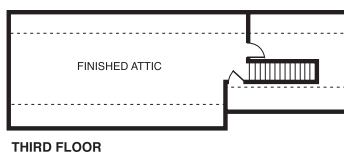
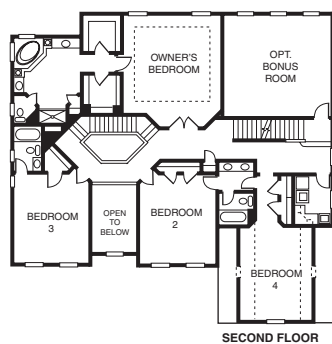
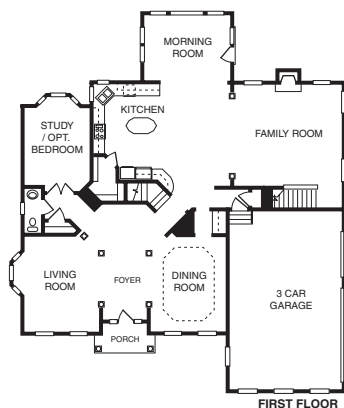
Dramatic two-story family room opens to designer kitchen with gourmet island. Second floor features deluxe owner's suite with impressive bathroom including tray ceiling and dual shower heads. Two bedrooms share buddy bath, while fourth bedroom features princess-style bath and walk-in closet. Options include morning room, first-floor bedroom suite, study, bonus room and finished third floor. Three-car garage included. Homes starting in the \$530s. **F**

**Directions:** Take I-295 to Exit 51A (Nuckols Road North); go approximately 3 miles to Pouncey Tract Road; go 0.5 miles to right into community. Model on right.

**Builder Contact:** Ryan Homes, (804) 272-6013

**Agent Contact:** Kelly Williamson, Fallon McNeil, (804) 216-7926, Ryan Homes

[www.ryanhomes.com](http://www.ryanhomes.com)



## 19 Orleans Homebuilders Henley

\$1,695,000 | 6,563 sq. ft. | Henrico County

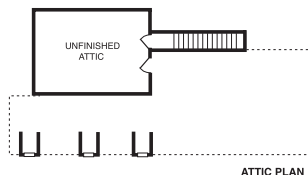
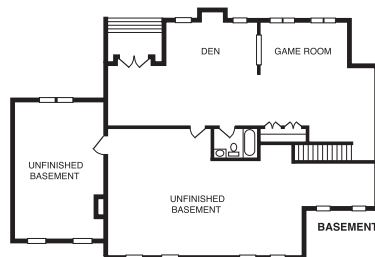
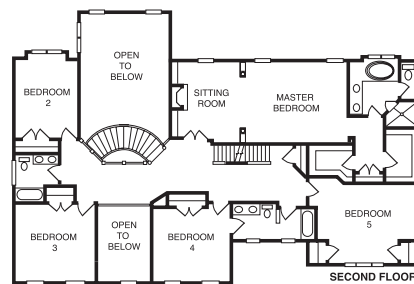
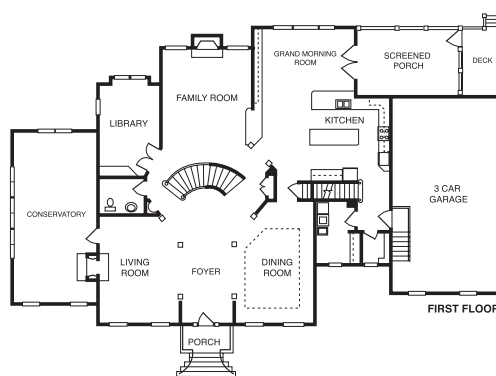
The stately Bellingham Grand Georgian four-level home offers the most in upscale features and structural options. From the finished game and entertaining area in the basement, the grand stairway in the foyer, the conservatory, luxury master suite, 4 other bedrooms and unfinished attic, this home has it all. **F**

**Directions:** I-295 to Nuckols Road North; 3 miles to Henley on the left, on Pouncey Tract Road.

**Builder Contact:** Betty O'Neil, (804) 323-3100, ext. 201

**Agent Contact:** Shirley Boppe, (804) 283-2098, P&L Realty

[www.orleanshomes.com](http://www.orleanshomes.com)



## 20 Centex Homes Turnberry

\$698,000 | 4,545 sq. ft. | Henrico County

Gracious formal rooms, study, dual staircase, soaring ceilings, a see-through fireplace between the family room and keeping room, a gourmet kitchen and adjoining sunny morning room, wet-bar, 5 bedrooms and 4½ baths highlight this home. The master suite offers a retreat with sitting room with gas fireplace. **F**

**Directions:** From I-295, take Exit 51, Nuckols Road North; left at second light on Twin Hickory Road; go straight 1.3 miles to left into community onto Turnberry Park Drive, just before the intersection at Pouncey Tract Road; or from Short Pump, go north on Pouncey Tract Road to right on Shady Grove Road to right onto Turnberry Park Drive.

**Builder Contact:** Stacie Hogan, (804) 521-3449

**Agent Contact:** Cheryl Bemis, (804) 364-0107, Centex Homes

[www.centexhomes.com/richmond](http://www.centexhomes.com/richmond)

