



## 24 HHHunt Homes Linden Point

\$643,080 | 3,431 sq. ft. | Henrico County

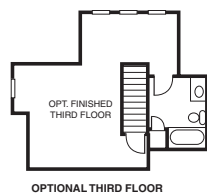
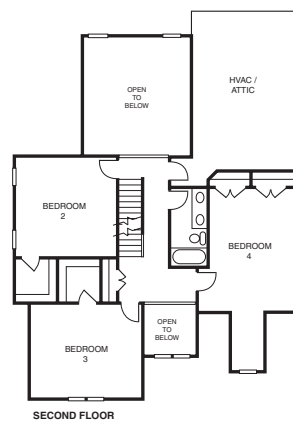
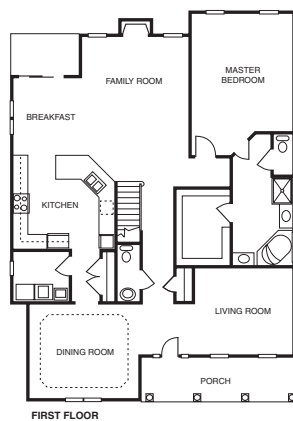
The all-brick, 5-bedroom, 3½-bath Worthington boasts a charming front porch and a detached garage. It features a first-floor owner's suite, expansive family room with gas fireplace and a finished third floor. Luxury touches include maple cabinets, hardwood floors in living and dining rooms, kitchen and foyer, tiled baths and handsome moldings throughout. This home has been sold; please visit our new model at 9209 Ponnello Lane. **F**

**Directions:** Take I-295 to Route 33 East (Staples Mill Road); right on Springfield Road; Linden Pointe is on the left.

**Builder Contact:** Jill Kreis, Jeri Clark, (804) 640-9853

**Agent Contact:** Jill Kreis, Jeri Clark, (804) 640-9853, HHHunt Homes

[www.hhhunthomes.com](http://www.hhhunthomes.com)



## 25 Eagle Construction of Va. LLC Berkeley at CrossRidge

\$380,287 | 2,334 sq. ft. | Henrico County

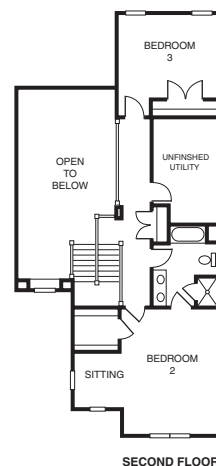
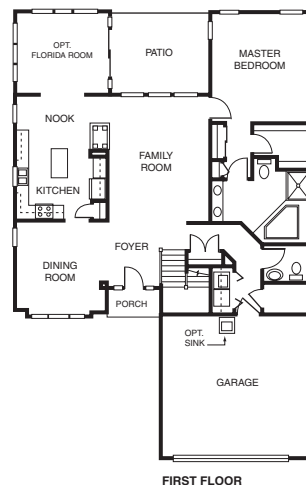
The Hamilton model is from the Berkeley Collection of low-maintenance homes in CrossRidge, a gated community for active adults featuring a private club with indoor pool. There's a first-floor master suite, a two-story family room with gas fireplace and a kitchen with breakfast nook. The Florida room flows out onto the patio, while upstairs there are 2 bedrooms, a second bath and plenty of storage. **F**

**Directions:** From I-295, take Route 33 East Exit (Staples Mill Road); follow Staples Mill Road to the entrance of CrossRidge and turn right onto CrossRidge Glen Way; turn right onto Buchmill Drive and model will be on the left.

**Builder Contact:** Pam Nelson, (804) 741-4663

**Agent Contact:** Diane Houff, Jeanne Ames, (804) 756-6100, Eagle Construction of Va. LLC

[www.eagleofva.com](http://www.eagleofva.com)



## 26 Stern Homes Stone Mill

\$515,230 | 3,392 sq. ft. | Henrico County

Stone Mill is a small, fashionable, West End community with larger lots. This three-story, 6-bedroom plan features a downstairs study and a very open design. This home is "loaded" with extras such as sod, aggregate driveway, brick front and Hardiplank siding, \$5,000 shrub package, granite countertops, etc. Homes starting in the upper \$400s.

**Directions:** From I-295, take Exit 49B (U.S. 33/Staples Mill Road East); go east on Staples Mill Road for 0.3 miles; turn left onto Stone Bluff Court at subdivision entrance. House is on right.

**Builder Contact:** David L. Dickerson, (804) 550-4717

**Agent Contact:** Bill Press, (804) 427-5095, ERA Woody Hogg

