



27 Hallmark Home Builders Inc.
Hunton Station

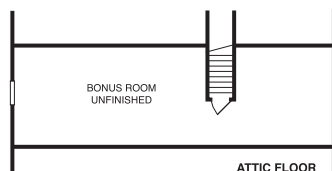
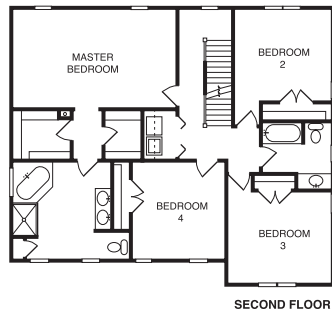
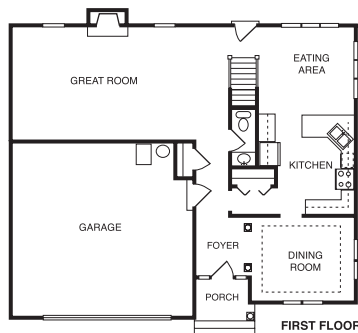
\$454,500 | 3,010 sq. ft. | Henrico County

Welcome to Glen Allen's premier gated community of single-family homes. The Charlotte model features spacious rooms, a finished third level, low maintenance, brick and vinyl and more. Tired of spending your weekends doing yardwork? Let the association take care of it for you. Amenities include maintenance-free landscaping and free irrigation. Hunton Station offers new homes from the \$380s. **F**

Directions: Take I-295 to Staples Mill Road East Exit; first left on Mountain Road; left on Mill Road; subdivision is 2 miles on right. Model home is first house in subdivision on right hand side.

Builder Contact: Jenn Fulwider, (804) 285-7024

Agent Contact: Rhonda Everett, David Brosseau, Janet Newcomb, (804) 747-9933, Hometown Realty
www.hhbva.com



28 The Nolde Company Inc.
Mountain Spring

\$499,500 | 3,129 sq. ft. | Henrico County

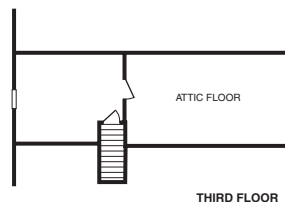
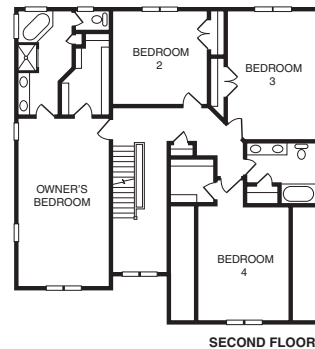
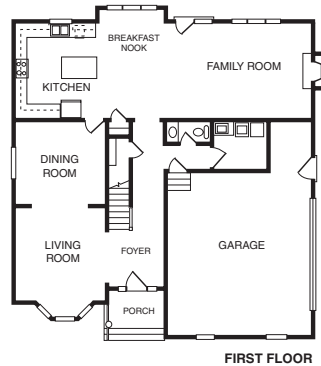
Homes from the \$480s. Visitors to this home are greeted with a great view of the formal living room with bay and dining room, both with hardwood floors and triple crown molding. Enter into designer kitchen with island, granite countertops and hardwood floors that flow into family room with fireplace and enjoy the outside from your deck. All homes with sod, irrigation and paved drives.

Directions: I-295 to Route 33 East (Staples Mill Road); at first stoplight turn left on Mountain Road; take first left into Mountain Spring.

Builder Contact: John A. Nolde Jr., (804) 935-7111

Agent Contact: Mary Ann Currie, (804) 677-3582, Long & Foster

www.maryannecurrie.com



29 Liberty Homes Inc.
Spring Lake

\$375,385 | 2,485 sq. ft. | Henrico County

The "Steven" features a kitchen with an island, upgraded appliances and hardwood floors. French doors lead from the family room to a spacious deck. The dining room features an octagonal ceiling. Formal areas include hardwood floors and generous double moldings. The spacious master bedroom has a vaulted ceiling and luxurious bath with jetted garden tub. Two additional bedrooms and a bonus room complete upstairs.

Directions: I-295 to Woodman Road south; left on Mountain Road. Spring Lake is 0.75 miles on the right.

Builder Contact: Shawn Tuthill, (804) 730-7770

Agent Contact: Bryan Capel, (804) 382-0878, Hometown Realty

www.libertyhomesinc.net

