



30 Orleans Homebuilders
Ridge at Hunton Park

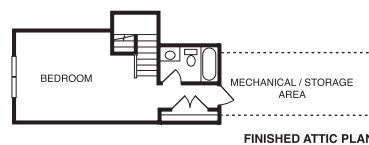
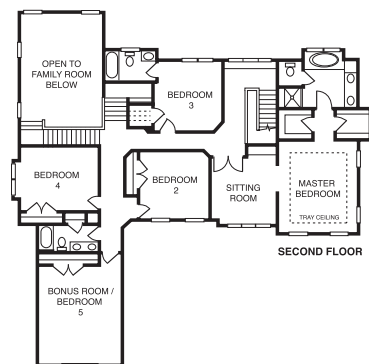
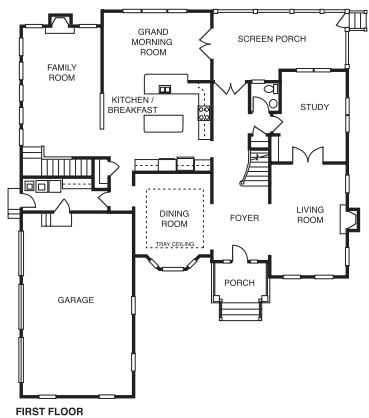
\$878,000 | 4,610 sq. ft. | Henrico County

The brick-front Covington offers three levels of well-designed space. Included in this home is a morning room, large screened porch and oversize office on the main level. A master suite and 3 other bedrooms and a loft/playroom are on the second level and a finished guest suite or fifth bedroom is on the third level. **F**

Directions: From I-295, take Route 33 (Staples Mill Road) West, exit 49A; take immediate right onto Hunton Park Boulevard. Ridge at Hunton Park is on the right; model straight ahead on left.

Builder Contact: Betty O'Neill, (804) 323-3100

Agent Contact: Lou Wimbish, (804) 283-2019, P&L Realty
www.orleanshomes.com



31 Ryan Homes
The Villas at Hunton Park

\$425,990 | 2,925 sq. ft. | Henrico County

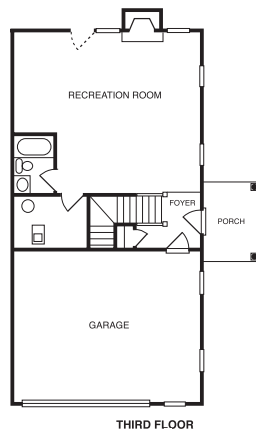
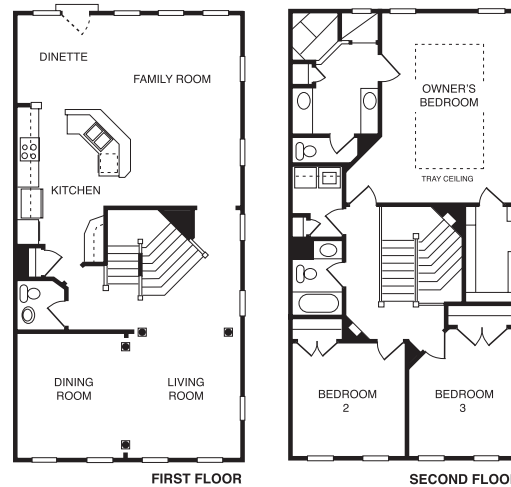
Cascading stairs and decorative columns accent the formal living and dining rooms. Eat-in kitchen features island with breakfast bar and opens into family room. Owner's suite features walk-in closet, Roman shower and dual vanity with optional jetted tub and shower. Two additional bedrooms, second full bath and laundry room complete the upper level. Lower level has recreation room with fireplace, double patio door and optional full bath. Homes starting in the \$290s. **F**

Directions: Take I-295 to Exit 49A (Route 33 West); take immediate right on Hunton Park Boulevard; go ½ mile to right on Sienna Lane; take next immediate right. Model will be on the left.

Builder Contact: Ryan Homes, (804) 272-6013

Agent Contact: Sara Williams, Tara Daly, (804) 264-4060, Ryan Homes

www.ryanhomes.com



32 Orleans Homebuilders
Thomas Mill

\$1,062,500 | 7,590 sq. ft. | Henrico County

A deep country porch invites you into the large farmhouse-style Chandler V. The first floor has formal rooms, family room, study, kitchen with morning room, and conservatory. The special features include a see-through fireplace and attached potting room, and three-car garage. The second floor has 3 to 4 bedrooms, bonus room and master suite with sitting room. The finished third floor has a full bath and closet, and there's a finished basement. **F**

Directions: Old Washington Highway north of Mill Road, just north of I-295 and Staples Mill Road; turn left into Thomas Mill. Model is on the left.

Builder Contact: Betty O'Neill, (804) 323-3100

Agent Contact: Jane Adams, (804) 283-2059, P&L Realty
www.orleanshomes.com

