



33 Eagle Construction of Va. LLC Riverview Green

\$275,500 | 1,247 sq. ft. | Henrico County

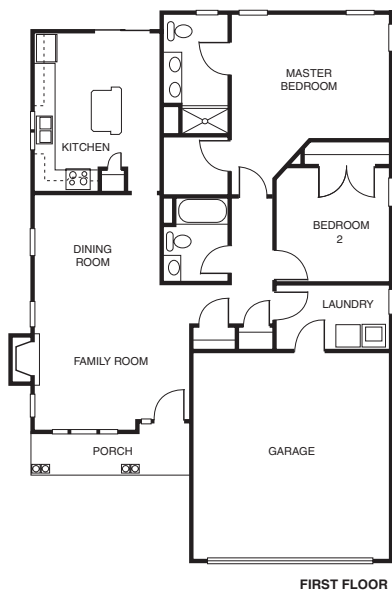
A low-maintenance cottage home in Riverview Green, a gated community for active adults, featuring a private club with indoor pool. The master suite plus a second bedroom and bath are on the first floor. The large family room with gas fireplace flows into the dining room. The kitchen has the added convenience of an island, and there is a two-car garage. This home will not be open during the Parade, but please visit in spring 2008.

Directions: From I-295, take Woodman Road North Exit; turn left onto Greenwood Road. The entrance to Riverview Green will be on the right.

Builder Contact: Pam Nelson, (804) 741-4663

Agent Contact: Diane Houff, Jeanne Ames, (804) 756-6100, Eagle Construction of Va. LLC

www.eagleofva.com



34 StyleCraft Homes Huntington Place

\$310,843 | 1,985 sq. ft. | Henrico County

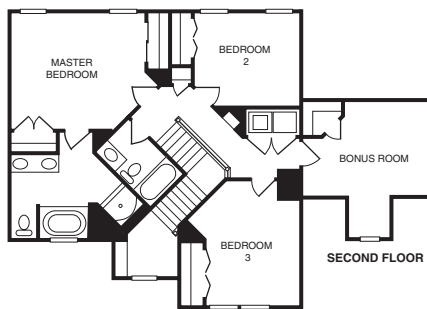
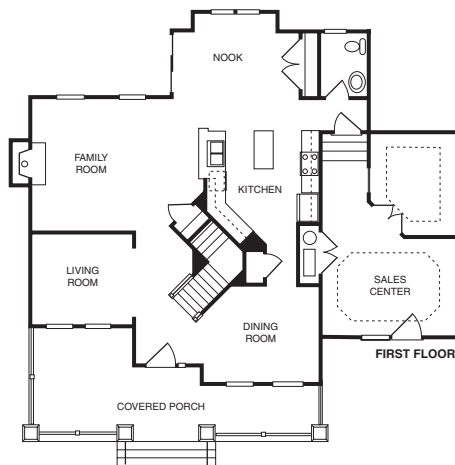
This village of Craftsman-style homes is perfect for the first-time homebuyer and anyone seeking great quality and style at a great value. It's convenient to Virginia Center Commons and to downtown. The featured plan offers 3 bedrooms, 2½ baths, a bonus room and plenty of living space on the first floor. The kitchen features a center island and is adjacent to a breakfast nook with bay window. Homes starting in the low \$200s. **F**

Directions: From I-95, take Exit 81 (Brook Road); veer left from exit to stop sign and turn left onto Wilmer Avenue; cross Chamberlayne at traffic light and continue on Wilmer until road ends at Huntington Place.

Builder Contact: Kevin Kirwan, (804) 440-5639

Agent Contact: Brian Spalding, (804) 515-0603, StyleCraft Realty

www.stylecrafthomes.com



35 CraftMaster Homes LLC Candlelight Estates

\$299,999 | 2,329 sq. ft. | Henrico County

Fantastic design with impressive details around every corner, such as the elegant foyer with stepped-down dining room, the kitchen with angled bar. Spacious owner's suite and super-sized bedrooms with thoughtful layouts for furniture placement. **F**

Directions: From I-64 take 360 East (Mechanicsville Turnpike) Exit; turn right on Hussey Lane. Model is first house on the left. From I-295 take 360 West Exit; turn left on Hussey Lane. Model is first house on the left.

Builder Contact: Jeff Tunstall, (804) 739-0770

Agent Contact: Todd Fisher, (804) 301-3766, Hometown Realty

www.craftmaster-homes.com

