



42 Main Street Homes
Turner Forest

\$425,522 | 3,856 sq. ft. | Henrico County

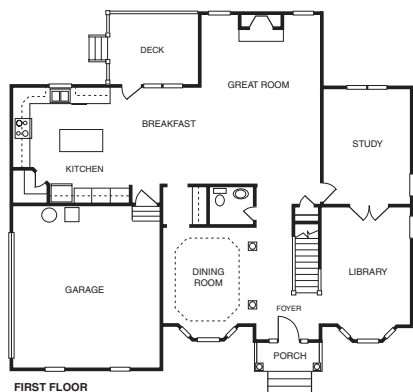
Gorgeous three-story home in the heart of Varina. The beautiful two-story foyer opens to a stunning dining room on the left. The huge great room flows into the breathtaking gourmet kitchen. Features an unbelievable master along with 3 additional bedrooms on the second floor, a huge bonus room and a finished third floor with full bath. **F**

Directions: From Route 895, take I-295 South to the Varina Exit; turn left onto Turner Road.

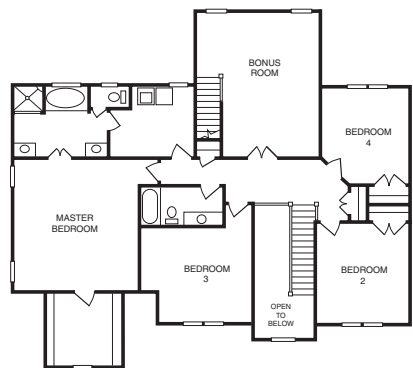
Builder Contact: Amy Moldovan, (804) 794-3138 ext. 3020

Agent Contact: Melissa Bailey, (804) 795-7200, Main Street Homes

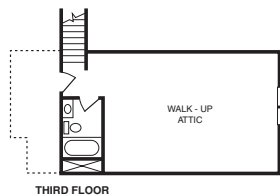
www.mainstreethomes.info



FIRST FLOOR



SECOND FLOOR



THIRD FLOOR



43 Stephen Thomas Homes
Mountain Run

\$849,995 | 3,879 sq. ft. | Hanover County

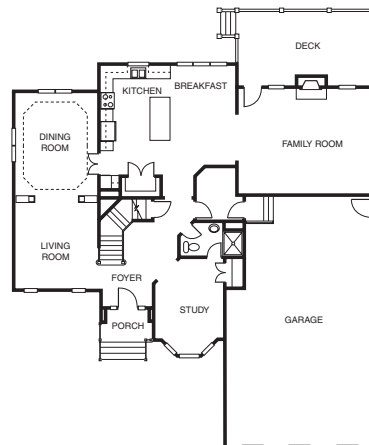
The elegant 4-bedroom, 4-bath Cambridge III includes two-story foyer, dining room with recessed lighted ceiling dome, spacious kitchen and breakfast nook, as well as first-floor study with full bath. A generous sitting area complements the second-floor master bedroom. The three-car garage and unfinished third-floor bonus room complete this masterpiece home.

Directions: From I-295, take Route 33 (Staples Mill Road) West; go west on Route 33 six miles; turn right on Farrington Road, proceed 0.2 miles. Section 2 Mountain run is on the left.

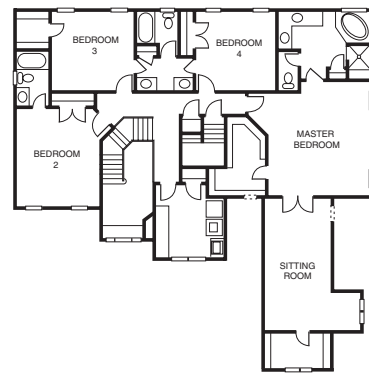
Builder Contact: Linda Pearman, (804) 672-6806

Agent Contact: Christy Burton, (804) 726-6313, Hometown Realty

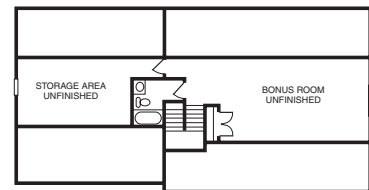
www.stchomes.com



FIRST FLOOR



SECOND FLOOR



THIRD FLOOR



44 Bramel Construction Co. Inc.
River Run at Country Club Hills

\$769,000 | 3,810 sq. ft. | Hanover County

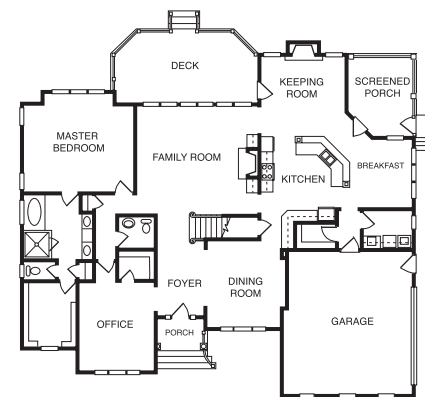
Our transitional brick home amenities include first-floor master suite, gourmet kitchen with keeping room, family room with screened porch with river view. Second floor includes 3 bedrooms with private baths, recreation room, loft and walk-in attic. Accents include hardwood floors, aged pewter fixtures, solid-surface counters, custom cabinetry and many more luxury features.

Directions: I-95 north to Ashland Exit (Route 54 West); go about 5 miles; turn right onto Country Club Hills Drive; take first left onto Riverside Drive; continue to new home section in "River Run." Home is fifth lot on the left in the new section.

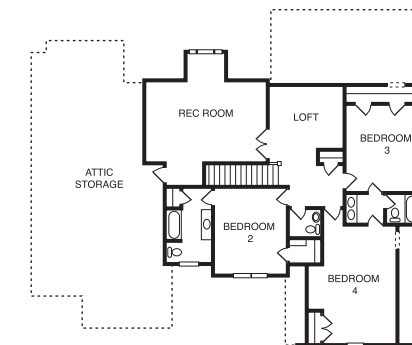
Builder Contact: Bramel Construction, (804) 752-2500

Agent Contact: Ginger Caskey, (804) 798-3246, ext. 311, Coldwell Banker Dew Realty

www.bramelconstruction.com



FIRST FLOOR



SECOND FLOOR