



48 W. B. Garrett Inc.
Scot's Landing

\$679,950 | 3,959 sq. ft. | Hanover County

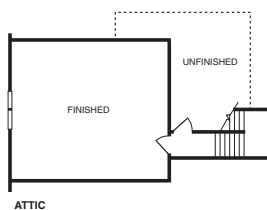
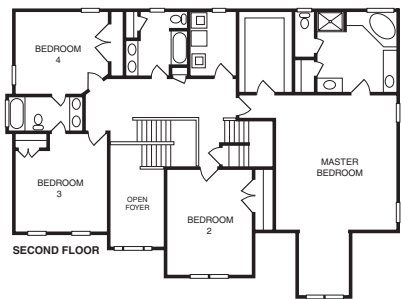
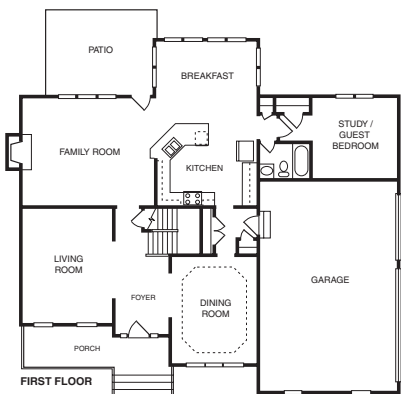
This beautiful home has everything you're looking for – formal rooms, bright and open kitchen and nook, downstairs guest bedroom/study, three-car garage, huge owner's suite, Jack-and-Jill bath upstairs, third-floor bonus room. **F**

Directions: I-295 to Route 360 East; left on Studley Road; right on Hanover Road; left on Scot's Landing Road. House is on right.

Builder Contact: Bill Garrett, (804) 515-9150

Agent Contact: Eugene Bordonie, Stephanie Brown, Billy Fulwider, Pam Wood, (804) 730-7195, Hometown Realty

www.wbgarrett.com



49 Colonial Homecrafters Ltd.
Atlee Station Village

\$415,225 | 2,636 sq. ft. | Hanover County

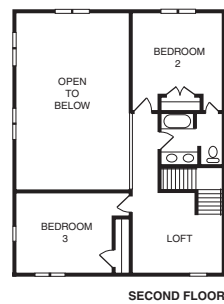
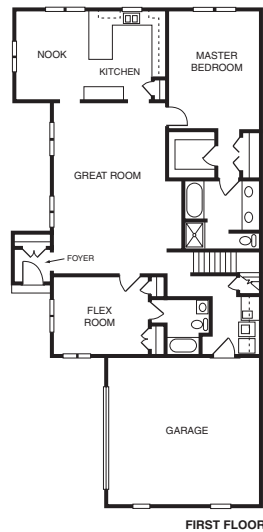
Atlee Station Village, a 55+ community, offers 60 paired residences on a 20-acre site with the best clubhouse in Hanover County. Builder will customize his six plans, which have both a master suite and second bedroom with bath on the first floor. 2 additional bedrooms, bath and loft on second floor. True two-car garages of 24' x 24' minimum. **F**

Directions: From I-95, take Atlee Exit (Exit 86) just north of I-295; turn right onto Atlee Station Road at first traffic light; proceed 1.2 miles. Development is on the right. From Route 301 just north of I-295, turn onto Atlee Station Road and proceed 2.5 miles. Development is on the left.

Builder Contact: Willie & Eddie Goode, (804) 741-6061

Agent Contact: Brick Smith, (804) 741-4108, Metropolitan Real Estate

www.chchomes.com



50 StyleCraft Homes
The Villas at Rose Hill

\$387,396 | 1,790 sq. ft. | Hanover County

The Durham in this maintenance-free community has a family room and dining room separated by a three-sided fireplace, and an open kitchen with large island. There is a screened porch next to the kitchen and family room, and the angled window walls of the dining room lead to a patio. The master suite shares the first floor with another bedroom or study and full bath. Homes starting in the low \$300s. **F**

Directions: I-295 to Meadowbridge Road; at the third stoplight turn left onto Atlee Road. Rose Hill is on the left.

Builder Contact: Kevin Kirwan, (804) 440-5639

Agent Contact: Vicki Trice & Gail Israel, (804) 559-9952, StyleCraft Realty

www.stylecrafthomes.com

