



51 Prospect Homes
Lake Ridge Green

\$277,950 | 1,887 sq. ft. | Hanover County

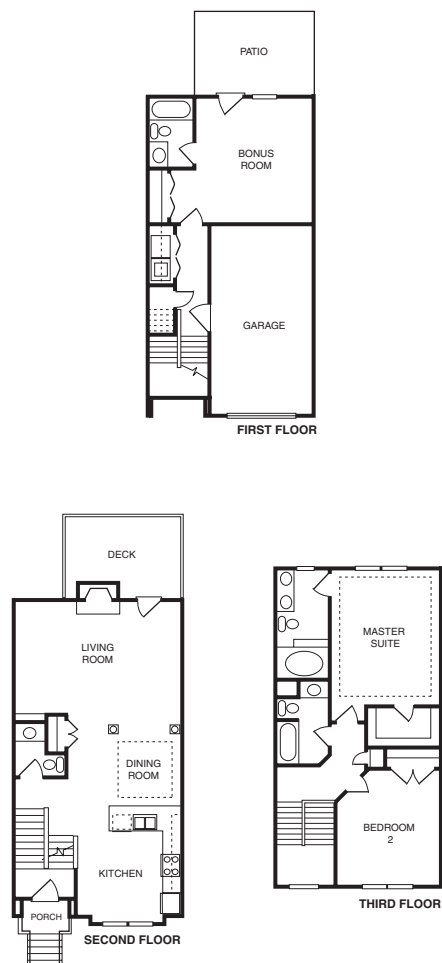
The Florence is pure curb appeal with its distinguishing exterior features that include two dormers, bump-out and arched window. The first floor provides easy access to the garage, laundry room and guest room with a full bath. The second floor features a wide-open kitchen, dining and family room. The third floor has a large owner's suite and another large bedroom. Homes from the \$250s. **F**

Directions: I-95 to the Atlee-Elmont Exit; follow Exit 86 (Elmont) onto Sliding Hill Road; go right on Lakeridge Parkway for 0.25 miles, turn right into subdivision, model will be in front of you.

Builder Contact: Sam Tarbona, (804) 965-9700

Agent Contact: Neal Larew, Jennifer Pracht, John Copley, (804) 550-1441, Prospect Homes

www.prospecthomes.com



52 Homeplaces Ltd.
Charter Lake at Kings Charter

\$485,000 | 3,104± sq. ft. | Hanover County

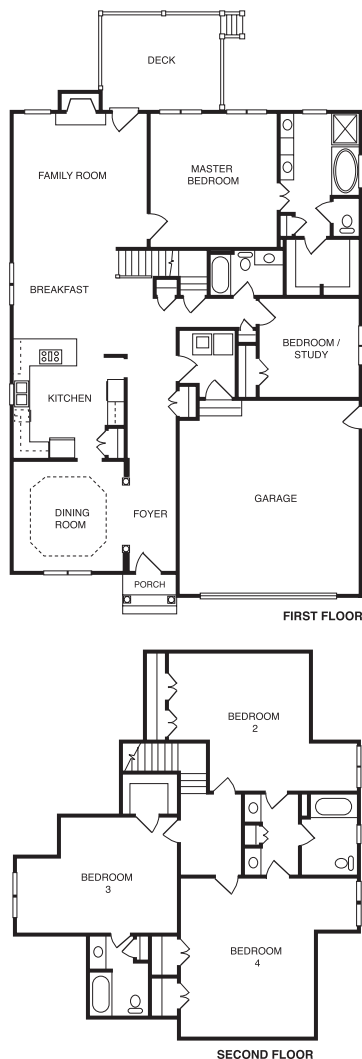
Why have a vacation home when you can have lakefront living every day at Charter Lake at Kings Charter? This home is nestled within amenity-packed Kings Charter and offers the privacy provided by the lake and by the gated entrance. Special features include: first-floor master suite, vaulted family room, upgraded interior trim and gourmet kitchen.

Directions: From I-95 North, take Exit 86A; turn right onto Atlee Station Road; go ½ mile; turn left onto Spring Ivy Lane; turn left onto Kings Charter Drive; Charter Lake Drive is on the immediate left.

Builder Contact: Tom Kellam, (804) 740-8100

Agent Contact: Sally Slate, (804) 937-4646, Metropolitan Real Estate

www.homeplaces.com



53 Colonial Homecrafters Ltd.
Honey Meadows

\$382,000 | 3,000 sq. ft. | Hanover County

Honey Meadows is nestled behind Atlee High, Chickahominy Middle and Cool Spring Elementary, where your children can walk to school. The amenities include a 7,000+ sq. ft. clubhouse, exercise equipment, ballroom, catering kitchen, pools and more, plus pedestrian trails situated around a 12-acre pond. Only 38 carriage homes, 30 1-acre home sites and 175 additional homesites to choose from. **F**

Directions: Take I-95 to Atlee/Elmont Exit; right on Atlee Station Road; left on Honey Meadows Road; or I-295 to Route 301 N Exit; at third light take a left on Atlee Station Road; go approximately 1/6 mile past schools and take a right onto Honey Meadows Road. Follow signs to the model home.

Builder Contact: Sally Slate, (804) 741-6061

Agent Contact: Sally Slate, (804) 741-4108, Metropolitan Real Estate

www.chchomes.com

