



54 HHHunt Homes
Pennington at Rutland

\$640,840 | 3,608 sq. ft. | Hanover County

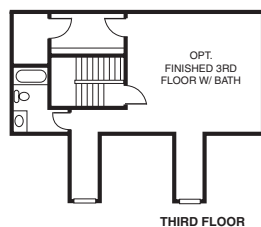
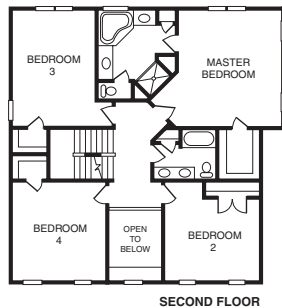
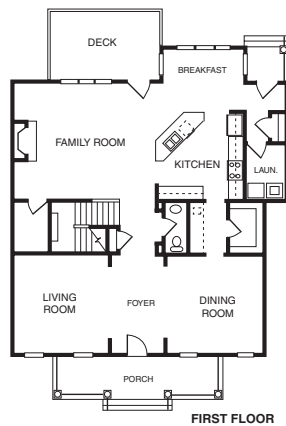
The 5-bedroom, 3½-bath Devonshire is impressive with its wide front porch and brick front. It features a butler's pantry, formal living and dining rooms, and kitchen open to the family room and breakfast nook. Upgrades include tiled owner's bath, hardwood floors, crown molding, chair rails, gas fireplace, third-floor suite and detached two-car garage. **F**

Directions: From I-295 Exit 301 East, turn left into Rutland at Atlee Road.

Builder Contact: Jill Kreis and Jeri Clark, (804) 263-1671, (804) 640-1033

Agent Contact: Jill Kreis and Jeri Clark, (804) 263-1671, (804) 640-1033, HHHunt Homes

www.hhhunthomes.com



55 Centex Homes
Bell Creek

\$518,110 | 2,983 sq. ft. | Hanover County

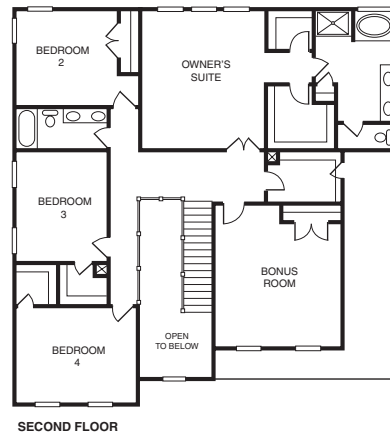
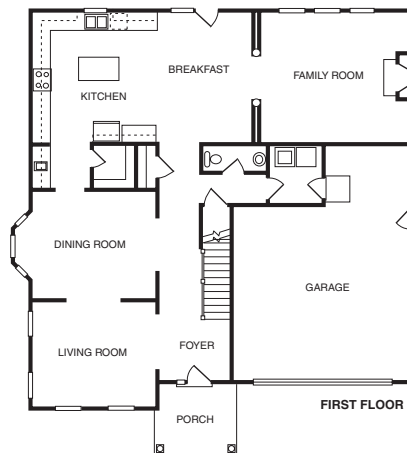
"The Covington's" dramatic two-story foyer invites you into this open home. Featuring up to 5 bedrooms, 2½ baths, spacious master suite, study, gracious formal rooms, 1,500-sq.-ft. unfinished basement and two-car garage. The magnificent gourmet eat-in kitchen, complete with wet bar and large island, opens into the spacious family room with gas fireplace. **F**

Directions: I-295 to Exit 38A, Pole Green Road; at the first light, turn left onto Bell Creek Road; continue straight for 1 mile; right on Vidette Lane. The model is on the left.

Builder Contact: Stacie Hogan, (804) 521-3449

Agent Contact: Kim McQuillen, (804) 559-0857, Centex Homes

www.centexhomes.com/richmond



56 R-CI Builders
Bluffs at Bell Creek

\$305,365 | 1,784 sq. ft. | Hanover County

The active-adult community at The Bluffs at Bell Creek features 2- and 3-bedroom, one-story floor plans with expansive kitchens and sunrooms. Prices start at \$304,950 with square footages from 1,780 to 1,863. The private clubhouse has a heated pool that is open year round, exercise equipment and a patio. Convenient access to shopping, restaurants. Adjacent to 130-acre historical park.

Directions: I-295 to the Pole Green Road Exit; turn onto Bell Creek Road at the 7-11; cross Verdi Lane into The Bluffs at Bell Creek; turn right onto Vidette Lane; turn right onto Red Sash Drive. Building is on the right.

Builder Contact: Julia Wilson, (804) 569-1520

Agent Contact: Lynda Plummer, Jim Driggs, (804) 559-2100, Hometown Realty

www.r-ci.net

