



57 Tomac Corp.
Bell Creek

\$470,655 | 3,490 sq. ft. | Hanover County

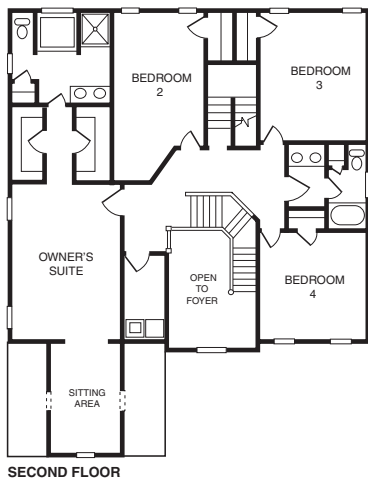
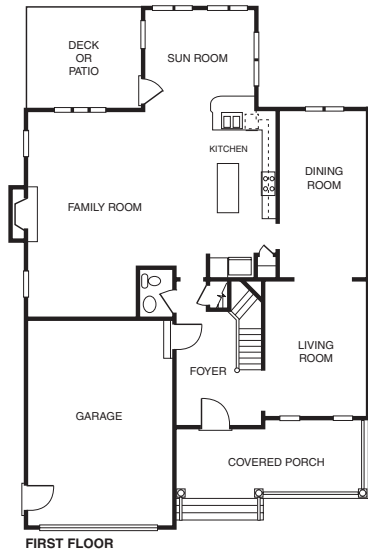
The country porch of the Brooke invites you into an inviting and warm home with gracious formal areas and spacious kitchen with light-filled sunroom. Generous bedrooms and room to grow with a finished third floor that maximizes your flexibility. Great standard features and top Tomac quality now in the heart of Hanover. Homes starting in the low \$400s.

Directions: Take I-295 to Exit 38A (Pole Green Road); turn left onto Bell Creek Road; follow it into community.

Builder Contact: Becky Hatch, (804) 794-4534

Agent Contact: Lynda Plummer, (804) 837-1016, Jim Driggs, (804) 240-8475, Hometown Realty Services

www.tomachomes.com



58 D.O. Allen Homes Inc.
Creekside Village

\$253,400 | 1,511 sq. ft. | Hanover County

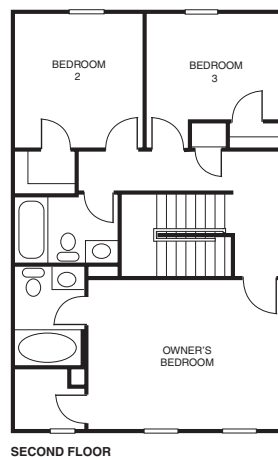
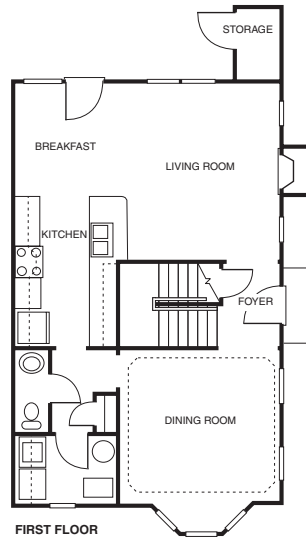
The Malvern has 3 bedrooms and 2½ baths. This end-unit features a side entrance with a foyer leading to an open living area and breakfast nook and a formal dining room with tray ceiling and bay window. A galley kitchen connects to the powder room, pantry closet and laundry room. On the second floor, the owner's suite features a cathedral ceiling, walk-in closet and full bath with garden tub. (This home will be completed in December, but please visit our sales center during the Parade.)

Directions: From I-295, take Exit 192 (Mechanicsville Turnpike East); continue approximately 3.5 miles to sales office on the left.

Builder contact: Pat Motyka, (804) 559-1924

Agent Contact: Pat Motyka, (804) 559-1924, D.O. Allen Homes Inc.

www.doallenhomes.com



59 Mountcastle Homes
Battlefield Green

\$494,461 | 4,648 sq. ft. | Hanover County

The popular Chamberlain boasts a welcomed combination of formal and informal spaces to be used by all. Up to 7 bedrooms, first-floor handicap-accessible master suite, large eat-in kitchen, Florida room, two-car garage, with a full spectrum of custom standard features throughout. Mountcastle Homes features 30 custom-built home designs that can be completely modified to fit your needs. **F**

Directions: From I-295, take Exit 37 (Mechanicsville Turnpike) East toward Tappahannock; go approximately 3 miles; turn left into Battlefield Green; then take first left into parking lot. Mountcastle Homes model will be on the left.

Builder Contact: Trent Sherman, (804) 746-0399

Agent Contact: Trent Sherman, (804) 746-0394, Frontier Properties Inc.

www.mountcastlehomes.com

