



63 R-CI Builders
McCauley Park

\$307,603 | 2,133 sq. ft. | King William County

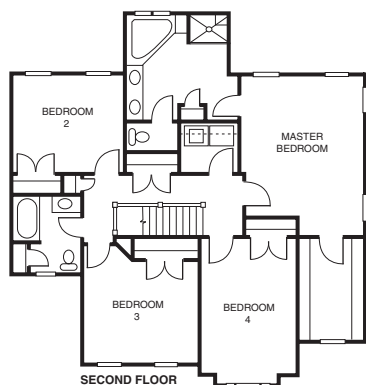
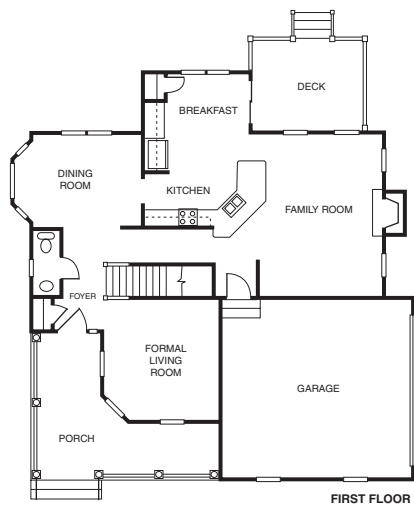
Model features four bedrooms, formal living room, hardwoods, ceramic tile, sod and irrigation on corner lot; paved drive, with two-car garage. Homes starting in the \$230s. **F**

Directions: I-295 to 360 East Exit; go approximately 16 miles to Route 30; turn left on Route 30. Subdivision will be 1 mile on left.

Builder Contact: Julia Wilson, (804) 569-1520

Agent Contact: Kevin Currie, Shannon Wall, Sean Davis, (804) 769-3933, Hometown Realty

www.r-ci.net



64 Orleans Homebuilders
Patriots Landing

\$812,500 | 4,719 sq. ft. | New Kent County

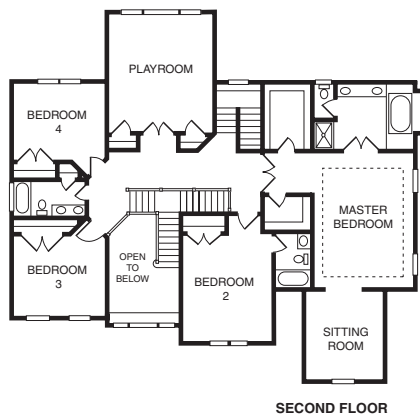
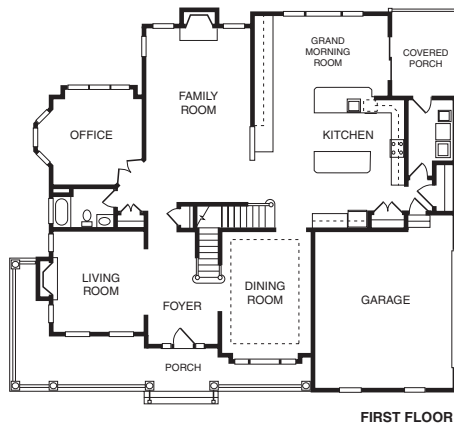
The Brookfield II model is one of the builder's best floor plans. The craftsman exterior features set the tone for this 4-bedroom family plan. The kitchen and grand room are great for family gatherings. The first floor also features a study/guest bedroom. The second floor highlight is a large playroom/media room over the 10'-ceiling family room. The third floor has a game room. **F**

Directions: I-64 east to Route 205 South at Bottoms Bridge Exit; turn left on Route 60; go 0.5 miles to Patriots Landing. Model is across from sales center.

Builder Contact: Betty O'Neill, (804) 323-3100

Agent Contact: Bobby Krausse, Brenda Etheridge, (804) 932-9400, East West Realty

www.orleanshomes.com



65 Tomac Corp.
Patriots Landing

\$625,000 | 3,459 sq. ft. | New Kent County

The Kentford plan features a myriad of exterior features that will impress. Unique interior features include keeping room and open flow. This home has potential for 6 bedrooms including a first-floor guest suite. This new home is in a growing area. Homes starting in the high \$300s. **F**

Directions: From Richmond take I-64 East to Bottoms Bridge (Exit 205); go right to Route 60 and turn left; go 0.5 miles to Patriots Landing; take first right. Entry is first home on right.

Builder Contact: Becky Hatch, (804) 794-4534

Agent Contact: Bobby Krausse, (804) 932-9400, Patriots Landing Realty

www.tomachomes.com

