



72 Emerson Builders
Brickshire

\$409,000 | 2,606 sq. ft. | New Kent County

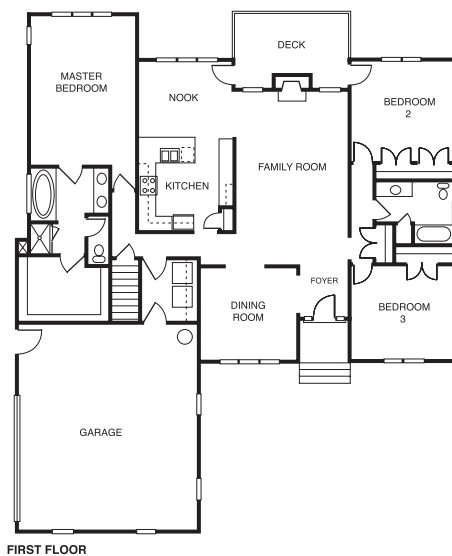
This brick-fronted rancher features a master suite with vaulted ceiling. The master bath offers ceramic tile on the floor, walk-in shower and jetted tub surround. A kitchen-breakfast room combination is open to the vaulted family room. There is a finished bonus room over a large two-car garage. A comfortable rear deck overlooks the sodded back yard. **F**

Directions: I-64 to Exit 214; south on Route 155 for ¼ mile; then left on Kentland Trail; follow directional signs to "The Sanctuary"; turn left on Virginia Rail into "The Sanctuary." Lot 81 is on Left.

Builder Contact: John Pishko, (804) 416-1116

Agent Contact: Clyde Parson, (804) 966-9810, Alliance One Realty at Brickshire

www.emerson-builders.com



73 LifeStyle Builders & Developers Inc.
Sanctuary at Brickshire

\$439,950 | 3,270 sq. ft. | New Kent County

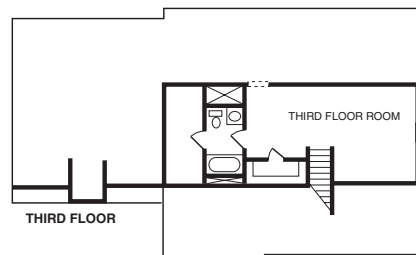
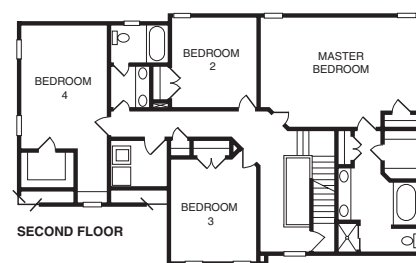
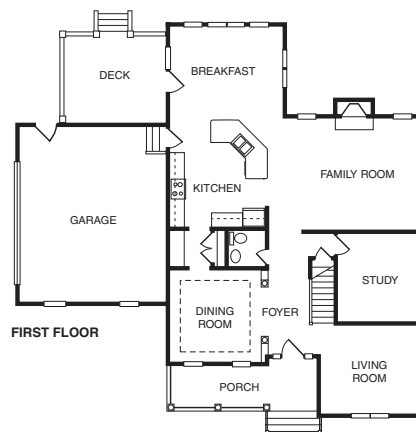
With elegant formal living and dining rooms, a first floor study and spacious kitchen with adjacent sunroom, the Clare combines functionality with trendy design. The kitchen has an angled serving bar and a butler's pantry. The owner's suite and 3 additional bedrooms plus laundry room complete the second floor. A third-floor bonus room can be a fifth bedroom or recreation room. Homes from the upper \$300s.

Directions: From I-64, take Exit 214 (New Kent/Providence Forge); turn south on Route 155 and travel for ¼ mile; turn left on Kentland Trail; go 3.5 miles; turn left on Virginia Rail Drive.

Builder Contact: Ed Melton, (804) 639-9440

Agent Contact: Ed Melton, (804) 639-9440, LifeStyle Builders & Developers

www.lifestylebuilders.com



74 McMahan Homes Inc.
Sanctuary at Brickshire

\$439,950 | 3,179 sq. ft. | New Kent County

The Monterey is the decorated model. The cheerful morning room and island kitchen are open to the family room. Formal living and dining rooms are ideal for entertaining. The master suite with deluxe bath is located on the second floor along with 3 more bedrooms and versatile loft space. The third floor completes this home with a bedroom, bath and storage. **F**

Directions: I-64 to Exit 214; south on Route 155; left onto Kentland Trail; go 3.2 miles; turn left into "The Sanctuary at Brickshire." Model home is ahead on the left.

Builder Contact: Donna Schurman, (804) 747-1125

Agent Contact: Clyde Parsons, (804) 966-9810, Alliance One Realty

www.mcmahonhomes.com

