



78 McMahon Homes Inc.
Anchor Point

\$299,950 | 2,418 sq. ft. | Hopewell

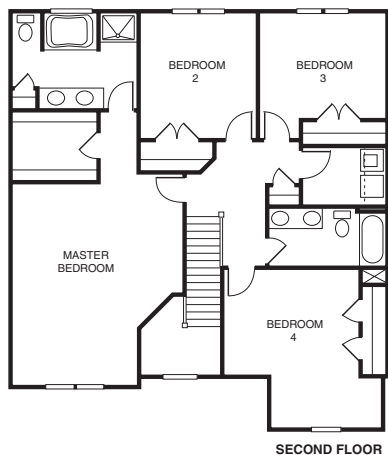
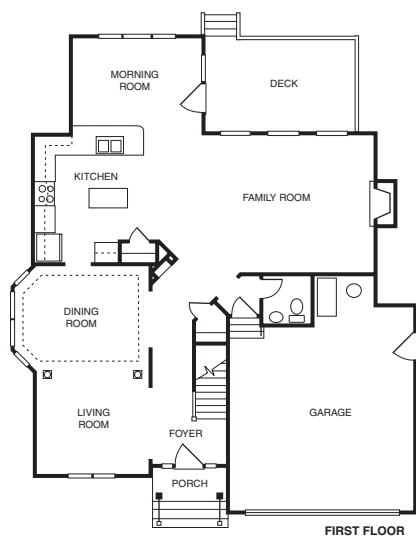
The Magnolia's gracious formal rooms are ideal for entertaining. The gourmet island kitchen with morning room is open to the family room. The oversize master suite, along with 3 more bedrooms and laundry room, are located on the second floor. (This home will not be open during the Parade; please contact agent for more information.)

Directions: I-95 to Exit 54 (Temple Avenue/Colonial Heights); go right on Temple Avenue about 3 miles; turn left onto River Road; go about 3.7 miles and cross over I-295 and turn left onto Atwater Road. Anchor Point is ahead on right.

Builder Contact: Donna Schurman, (804) 747-1125

Agent Contact: Tony Villani, (804) 288-8787 ext. 16, Villani Real Estate

www.mcmahonhomes.com



79 CraftMaster Homes LLC
Lake Jordan

\$397,052 | 3,054 sq. ft. | Dinwiddie County

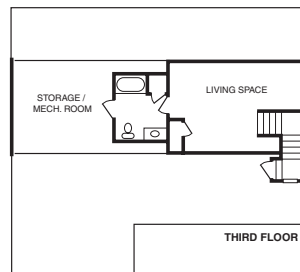
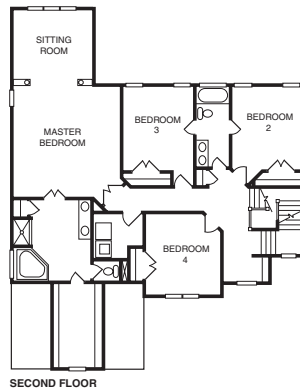
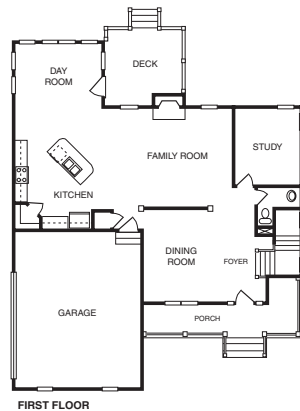
This beautifully designed and comfortably furnished home makes you want to come in, kick off your shoes and stay awhile. The Addison is a three-story design with a third-floor bedroom and bath. The plan features an open kitchen, day room and large family room in addition to a spacious master suite with a sitting room that has a lake view. Homes starting in the \$240s. **F**

Directions: I-85 to Route 460 East; turn right on Route 1 South; go about 2 miles and turn right on Jordan Heights Drive. Model is third house on the left.

Builder Contact: Jeff Tunstall, (804) 739-0770

Agent Contact: Carolyn Rogers, (804) 310-5952, Century 21 Signature Realty

www.craftmaster-homes.com



80 Emerson Builders Inc.
Meadowville Landing

\$1,250,000 | 5,222 sq. ft. | Chesterfield County

First floor of this all-brick transitional features master suite with large luxury bath, large hobby/utility room, formal living and dining rooms, study and gourmet kitchen with custom cabinets, granite countertops and stainless steel appliance package. Two staircases lead to the second floor, which offers 3 additional bedrooms, 3 full baths and a large rec room or second suite.

Directions: I-95 to Hopewell Exit; make left at second stoplight onto Rivers Bend Boulevard; at Rivers Bend, go 2.3 miles and make left into Meadowville Landing; left on Anchor Landing; right on Bluewater Drive; right on Bluewater Terrace. Lot 41 is on left.

Builder Contact: John Pishko, (804) 416-1116

Agent Contact: Kim Sloan, Marion Smith, Megan Emerson, Beth Kraus, (804) 530-8540, Coldwell Banker Advantage

www.emerson-builders.com

