



81 James E. Higgins & Son Contractor Inc.

Meadowville Landing

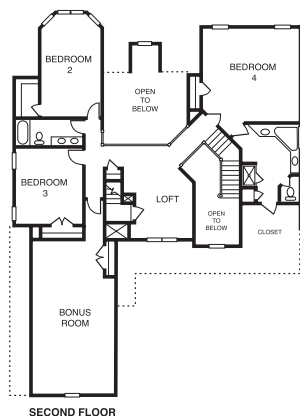
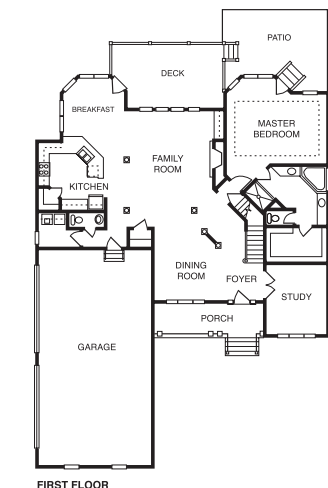
\$850,000 | 4,800± sq. ft. | Chesterfield County

This home offers two master suites, one up and one down. Open floor plan features living room, dining room that opens to a two-story great room with built-in bookcases and a wall of windows. Kitchen has Kraftmaid Cabinetry, Wolfe and SubZero appliances. Loft doubles as home office. Third floor is game room with full bath. Screened porch, stamped concrete sidewalk and patio. **F**

Directions: From I-95, take Route 10 East; left on Rivers Bend Boulevard; follow about 2 miles to entrance to Meadowville Landing.

Builder Contact: Jamie Higgins, (804) 717-9444

Agent Contact: Coldwell Banker, (804) 414-1371



82 Orleans Homebuilders Meadowville Landing

\$1,015,000 | 4,688 sq. ft. | Chesterfield County

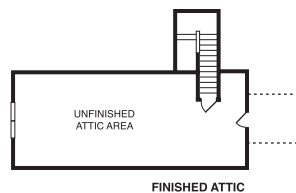
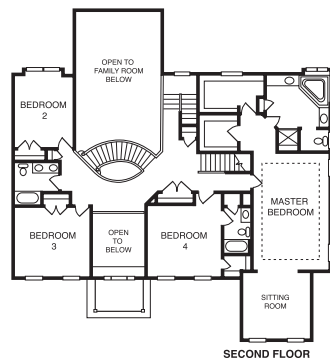
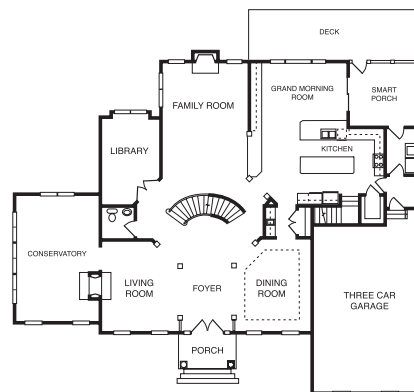
The Georgia Bradford Grand features a circular staircase in the entrance foyer, conservatory, grand morning room, screened porch and many other upgraded features. Its all-brick exterior is virtually maintenance-free. This 4-bedroom home has luxury master suite and unfinished third level. **F**

Directions: From I-95, take Route 10 East; left on Rivers Bend Boulevard; follow about 2 miles to entrance to Meadowville Landing. Entrance is on left; model home is straight ahead.

Builder Contact: Betty O'Neill, (804) 323-3100

Agent Contact: Kim Sloan, Marian Smith, Megan Emerson, Beth Krauss, (804) 414-1371, Coldwell Banker Advantage

www.orleanshomes.com



83 Boyd Homes Sycamore Springs

\$489,800 | 3,225 sq. ft. | Chesterfield County

Experience a graceful and private country setting, while still close to I-95, I-295 and Point of Rocks Park. There are 10 beautiful homes to choose from in this cozy, 32-homesite community ranging from ranchers to two or three stories – priced from the \$290s. The clubhouse, pool and tennis courts invite you to live your best life. Here, you will discover quality, value and convenience. **F**

Directions: From I-295, take Route 10 West; go 0.6 miles and turn left on Bermuda Orchard Lane; go 1.4 miles and turn left on Sycamore Springs Drive; take the first right on Sycamore Springs Court. Our model is the first house on the right.

Builder Contact: Justin Boyd, (757) 717-4054

Agent Contact: Dee Churchill, (804) 530-7690, Premier Realty

www.boydhomes.com

