



90 Finer Homes Inc. Bendahl Valley

\$383,795 | 3,564 sq. ft. | Chesterfield County

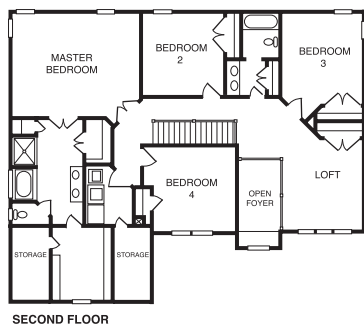
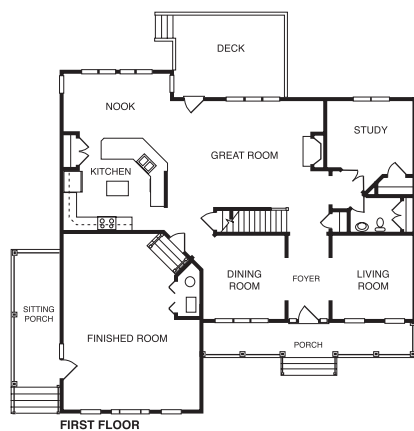
The Magnolia features a full front porch, which opens into a two-story foyer flanked by formal living and dining rooms and accented with arched doorways. The back of the house includes an open family room and gourmet kitchen as well as a "flex space" room. The master suite includes a bath and massive closet space. Loft adds to the floor plan. **F**

Directions: Route 288 to Route 10 (Iron Bridge Road); go about ½ mile; turn right onto Kingsland Road; go about 0.1 miles; turn left onto Beulah Road; go about 1 mile; turn right onto Salem Church Road; go about ½ mile. Subdivision is on the left after bridge.

Builder Contact: Clay Holt, (804) 748-7771

Agent Contact: Phillip Fore & Jackie Turner, (804) 748-7575, Finer Homes Inc.

www.finerhomesinc.net



91 Centex Homes Stonebridge Gardens

\$331,355 | 2,111 sq. ft. | Chesterfield County

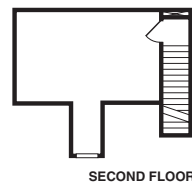
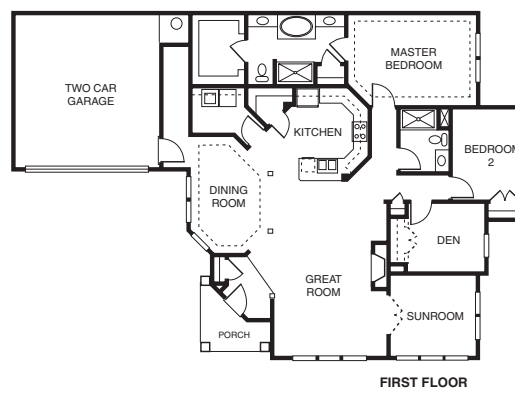
The Canterbury exemplifies the best that one-level living has to offer. This open floor plan features an elegant brick/stone exterior, soaring 10-foot ceilings, a great room with gas fireplace, formal dining room with tray ceilings, up to 3 bedrooms and 2 baths. The sunroom opens to a private patio. **F**

Directions: From I-95, take Exit 61 (Route 10 West); Hundred Road turns into Iron Bridge Road; turn left at the light at Chalkley Road to left on East Stonepath Garden Drive. The model is on the left. From 288, take Route 10 East Exit (Iron Bridge Road); turn right at the light at the DMV onto Branders Creek Drive; follow Branders Creek Drive to right on Chalkley Road to left on East Stonepath Garden Drive. The model is on the left.

Builder Contact: Stacie Hogan, (804) 521-3449

Agent Contact: Cheryl Hartje, (804) 706-5806, Centex Homes

www.centexhomes.com/richmond



92 Condrey Construction Company Arabella at The Highlands

\$675,000 | 3,595 sq. ft. | Chesterfield County

Beautifully appointed brick front Colonial, with everything you need on one floor. Elaborate millwork defines the living room and dining room. The gourmet kitchen includes cherry cabinets, a handcrafted hood and granite countertops. A coffered ceiling completes the family room with a custom mantel and entertainment center. The master suite features a large walk-in closet and a stunning master bath.

Directions: From Route 288, take Iron Bridge Rd./Route 10 East exit; follow Route 10 to Beach Road; turn right on Beach, then left onto Nash Road; turn left into Arabella, then take the first left onto Wynnstay. Home is on the left.

Builder Contact: Keith Condrey, (804) 561-6838

Agent Contact: Jim Capel, Brenda Price, Lisa Stone, Sean Story, (804) 748-7361, Highlands Realty

