



93 Emerson Builders Inc.
The Highlands

\$530,000 | 3,937 sq. ft. | Chesterfield County

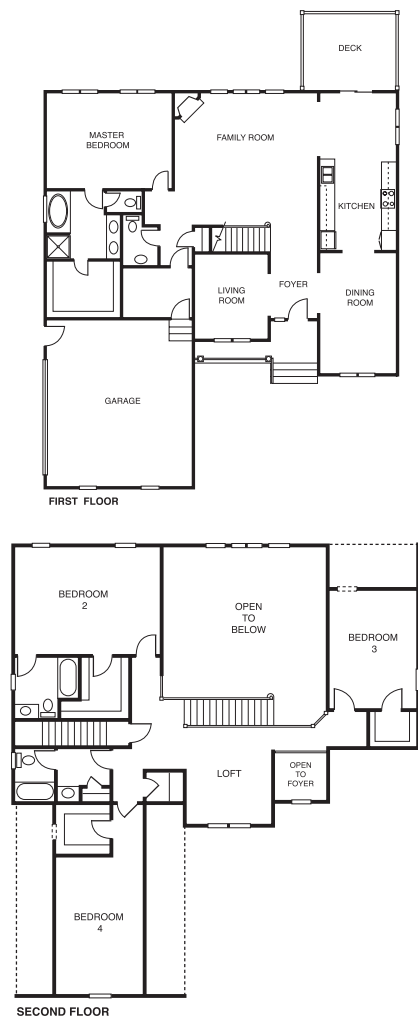
Brick-front home on golf course offers first-floor living with two-story entry foyer and formal rooms on either side with custom trim and hardwood floors. Gourmet kitchen with work island and raised-panel cabinetry opens to a breakfast area and vaulted family room. Three large bedrooms, all with walk in closets; a loft and 2 baths complete the second floor. (This home will not be open during the Parade; visit our sales center.)

Directions: I-95 south from downtown to Route 288 to Iron Bridge Road/Chesterfield Exit; follow Iron Bridge about 2 miles and turn right on Beach Road; go 2 miles and turn left on Nash Road; turn left on Eastfair Drive into the Highlands; go about 2 miles; turn left into Grampian.

Builder Contact: John Pishko, (804) 416-1116

Agent Contact: Highlands Realty, (804) 748-7361

www.emerson-builders.com



94 R. Hyde Benton Builders Inc.
Arabella at The Highlands

\$539,000 | 3,200 sq. ft. | Chesterfield County

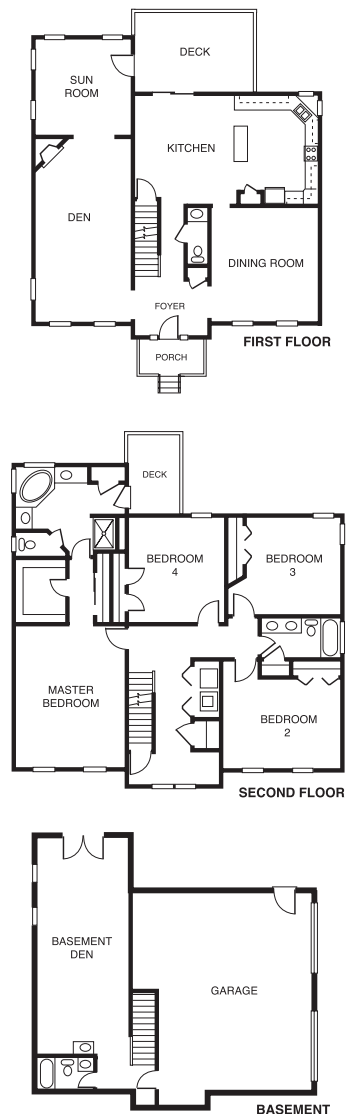
This traditional home with brick front and exposed aggregate drive boasts a finished daylight basement and two-car garage. Kitchen has custom cabinets, upgraded appliances and granite countertops. Main floor includes formal dining, family and sun rooms. The bedroom floor holds master bedroom and bath and three children's bedrooms with shared hall bath.

Directions: I-95 to Route 288; take Route 10 East Exit; turn right on Nash Road; turn left on Eastfair Drive (first Highlands entrance); turn left on Arabella Drive. Model is on the left, Lot 25.

Builder Contact: R. Hyde Benton, (804) 790-2440

Agent Contact: Highlands Realty, (804) 748-7361

www.bentonbuilders.com



95 Ridout Homes Inc.
The Highlands

\$565,000 | 3,950 sq. ft. | Chesterfield County

Finished basement. Lots of attic storage. If you need lots of space, this house is it. Great traffic pattern. Four baths, master suite on second floor with adjoining extra large master closet and large master bath. Dramatic two-story foyer.

Directions: Take Route 288 to Route 10; turn onto Beach Road; turn left onto Nash Road; follow signs.

Builder Contact: Rodney Ridout, (804) 768-1301

Agent Contact: Highlands Realty, (804) 748-7361

www.ridouthomesinc.com

