



**96 Quest Construction Inc.**  
Dunnottar at The Highlands

\$609,950 | 3,275 sq. ft. | Chesterfield County

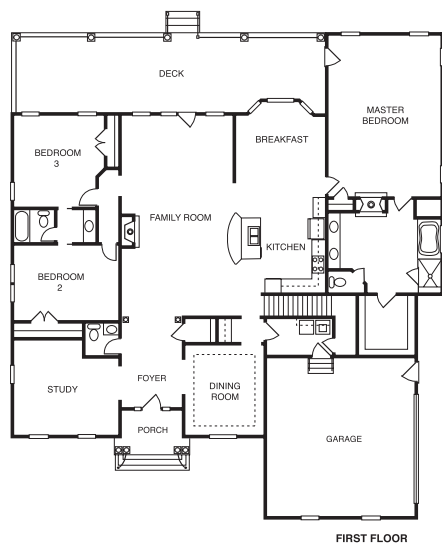
Majestic Southern home on 1.86 acres overlooking Highlands golf course. First-floor living with bonus room and bath up. Open transitional floor plan with abundance of windows and natural light. Hardwood floors, tray ceiling in dining room and crown molding grace the first floor. Veranda with fireplace located on back side of house overlooking golf course.

**Directions:** Route 10 to Beach Road to left on Nash Road; go 2.2 miles to second entrance of Highlands; from Highland Glen turn left onto Dunnottar Drive. First house on the left.

**Builder Contact:** George Vergara, (804) 748-3647

**Agent Contact:** Highlands Realty, (804) 748-7361

[www.questconstructionhomebuilders.com](http://www.questconstructionhomebuilders.com)



**97 Stirling Construction Inc.**  
Arabella at The Highlands

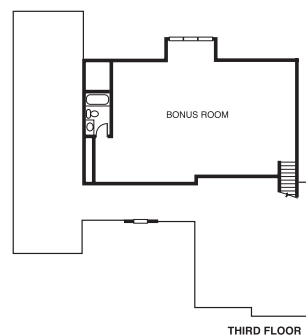
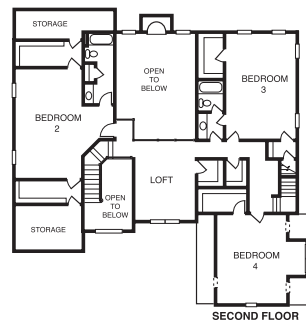
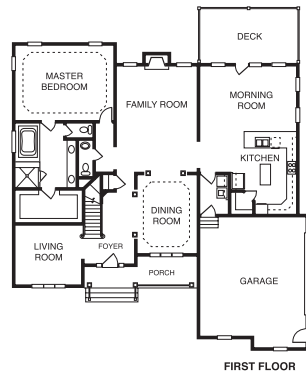
\$638,950 | 3,906 sq. ft. | Chesterfield County

Beautiful brick-and-vinyl home on a level wooded homesite. This home offers a huge gourmet kitchen, morning room and a soaring two-story family room. Loads of beautiful custom trim, custom cabinets in the kitchen, hardwood flooring and so much more.

**Directions:** Route 288 to Iron Bridge Road (Route 10) to Beach Road; go 1 mile to left on Nash Road; go about 2 miles to first Highlands entrance, which is Eastfair Drive; turn left and go about 2.5 miles to left on Arabella Drive. House is on the right.

**Builder Contact:** Bob Stirling, (804) 541-7253

**Agent Contact:** Highlands Realty, (804) 748-7361



**98 T. H. Burt Corporation**  
Grampian at The Highlands

\$474,730 | 3,012 sq. ft. | Chesterfield County

This classic home has Colonial styling with transitional appeal. The center hall is flanked by formal rooms with custom trim, columns and hardwood floors. The rear of the home offers bright, open entertaining space and a well-appointed kitchen with a huge walk-in pantry. Luxurious master suite has fireplace and huge dressing area.

**Directions:** Route 288 to Iron Bridge Road to Beach Road; go 1 mile to Nash Road; turn left; go 2 miles to first Highlands entrance; turn left on Eastfair Drive; go about 2.5 miles; turn right at Duntrune Drive; house is on the left.

**Builder Contact:** Harrison Burt, (804) 530-2878

**Agent Contact:** Highlands Realty, 804-748-7361

