



102 Ridout Homes Inc.
Chesdin Shores

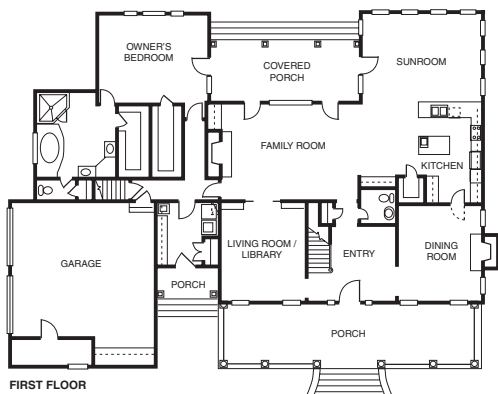
\$625,000 | 4,250 sq. ft. | Chesterfield County

Dramatic floor plan features a two-story foyer with open balcony, laundry room, a fireplace in the formal dining room and a huge kitchen opening into sunroom/kitchen dining area. First-floor master suite has large walk-in closet.

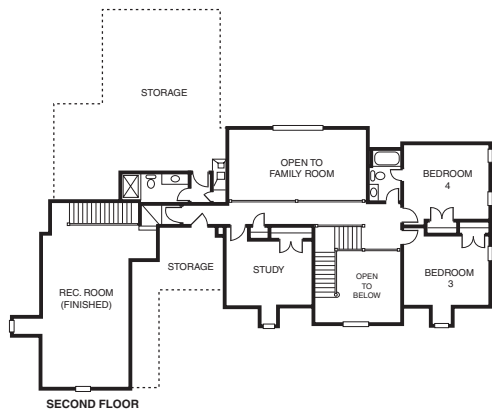
Directions: Route 288 to Route 10 to Beach Road; left onto Nash Road; right onto River Road to Ivy Mill, second entrance into Chesdin Shores. Follow signs.

Builder Contact: Ridout Homes, (804) 768-1301

Agent Contact: Chesdin Landing Realty, (804) 590-9900
www.ridouthomesinc.com



FIRST FLOOR



SECOND FLOOR



103 Boyd Homes
Cascade Creek

\$454,950 | 2,833 sq. ft. | Chesterfield County

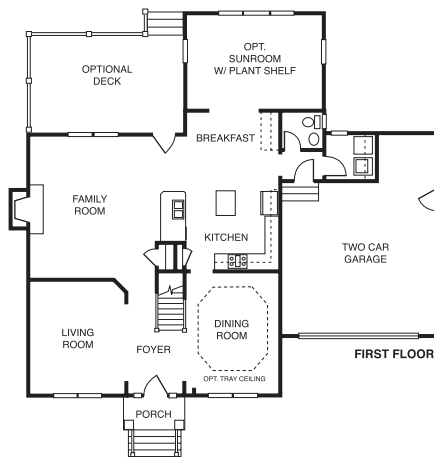
We have plans to fit your lifestyle with a clubhouse, pool, a tot lot for the kids, jogging and bike trails and tennis courts. There are 10 beautiful homes to choose from, ranging from ranchers to two and three stories. Priced from the \$290s, these affordable homes include the quality you deserve, at a price you can live with. **F**

Directions: From I-288, take Courthouse Road Exit; turn right if coming from I-95, left if coming from Route 360 (Hull Street Road); turn right at Belmont Road; continue on Belmont to Cogbill Road; turn left into Cascade Creek; take first left at Scotts Bluff Way. Model is the first house on the left.

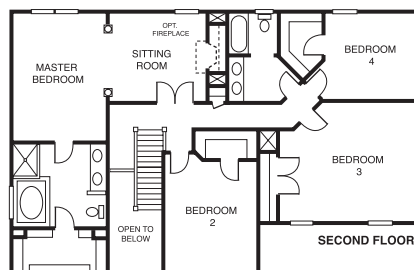
Builder Contact: Justin Boyd, (757) 717-4054

Agent Contact: Dee Churchill, (804) 743-1971, Premier Realty

www.boydhomes.com



FIRST FLOOR



SECOND FLOOR



104 Liberty Homes Inc.
Cascade Creek

\$306,055 | 2,309 sq. ft. | Chesterfield County

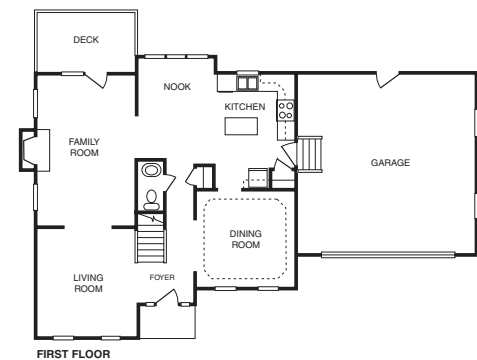
The Steven includes a formal living room, great room, formal dining room with hardwood floors, two-story foyer and a huge vaulted master suite with jetted tub. Exterior features include sod and irrigation, brick front and concrete driveway. **F**

Directions: Chippenham Parkway South to Belmont Road South; go 4 miles; turn right onto Cogbill Road, to entrance of Cascade Creek; go 1 mile; turn left onto Garden Ridge Drive.

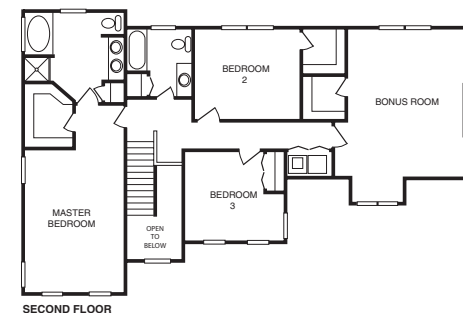
Builder Contact: Shawn Tuthill, (804) 730-7770

Agent Contact: Steve Warriner, (804) 379-1000, Virginia Real Estate Inc.

www.libertyhomesinc.net



FIRST FLOOR



SECOND FLOOR