



117 LifeStyle Builders & Developers Inc.

Sanctuary at Watermill

\$552,000 | 3,188 sq. ft. | Chesterfield County

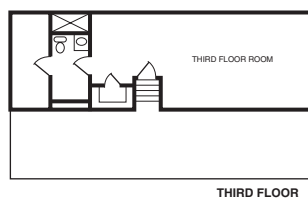
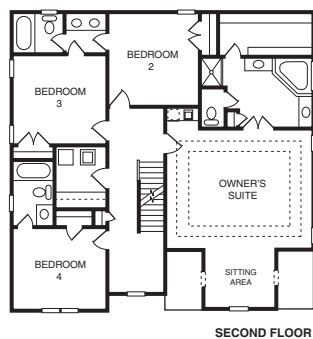
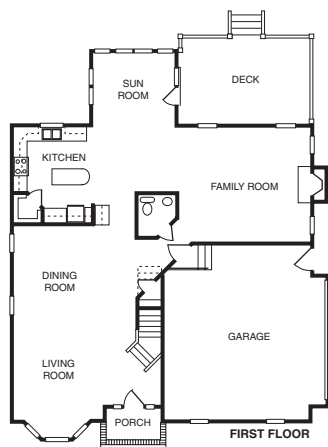
Sanctuary at Watermill is a Conservation Community with over 13 acres of preserved open space, and more than 25% of the homes back to federally protected wetlands. The Manchester model features an elegant stone and Hardiplank exterior, a gourmet kitchen and a third-floor rec room decorated as a tropical retreat. Homes from the mid-\$300s. **F**

Directions: From Route 288, take Powwhite Parkway (Route 76) west to old Hundred Road; turn left onto Watermill Parkway; Sanctuary at Watermill is about 2 miles on the right; turn right onto Seabird Drive. The model is on the left.

Builder Contact: Ed Melton, (804) 639-9440

Agent Contact: Mahood Fonville and Tom Gordon, (804) 379-6650, Long & Foster Realtors

www.lifestylebuilders.com



118 McMahon Homes Inc.

Sanctuary at Watermill

\$511,760 | 3,650 sq. ft. | Chesterfield County

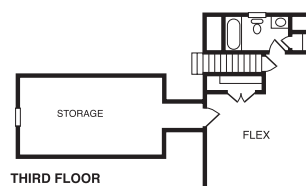
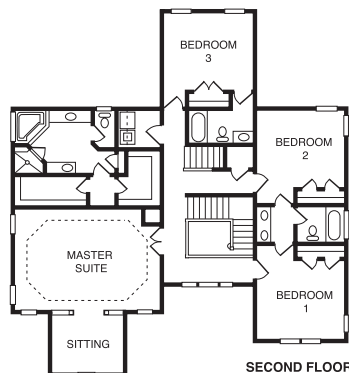
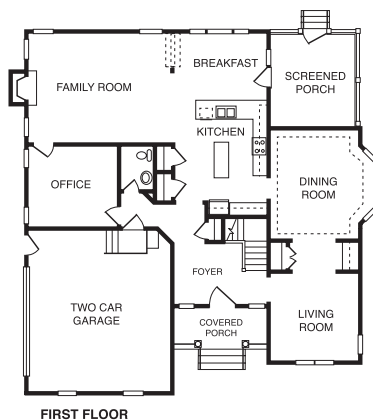
The Edenberry is the decorated model. Gracious formal rooms are ideal for entertaining. The cheerful morning room and island kitchen are open to the family room. An office is on the first floor. The master suite with deluxe bath is located on the second floor with three more bedrooms and laundry room. The third-floor media room completes this home. **F**

Directions: Follow Route 76 (Powwhite Parkway) until it turns into Old Hundred Road; turn left on Watermill Parkway; follow the Sanctuary signs; entrance to Sanctuary is on the right. Model home is ahead on the left.

Builder Contact: Donna Schurman, (804) 747-1125

Agent Contact: Mahood Fonville and Tom Gordon, (804) 360-3636, Long & Foster Realtors

www.mcmahonhomes.com



119 Orleans Homebuilders

FoxCreek

\$987,500 | 5,870 sq. ft. | Chesterfield County

The Canterbury Grand model features a stacked stone and siding exterior. A large formal living room has arched entrances into an oversize conservatory, a study, inviting kitchen with rear stairs; a grand morning room and a large family room with fireplace complete the first floor. The second floor includes 3 bedrooms, playroom and master suite with sitting area. The third floor is finished with a full bath. **F**

Directions: Take Powwhite Parkway to Woolridge Road; subdivision is between Genito and Otterdale roads; turn left off Woolridge into FoxCreek. Thistledeew is on the right.

Builder Contact: Betty O'Neill, (804) 323-3100

Agent Contact: Cindy Peter, (804) 283-6353, Orleans

www.orleanshomes.com

