

120 Prospect Homes
FoxCreek

\$548,950 | 3,874 sq. ft. | Chesterfield County

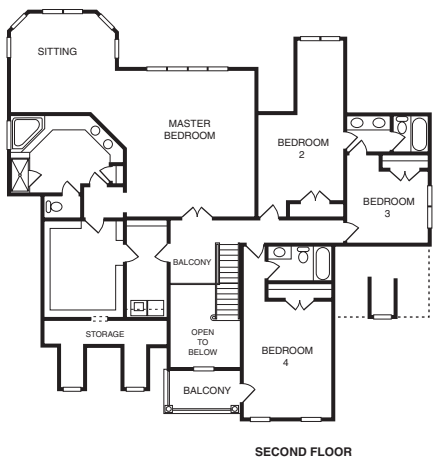
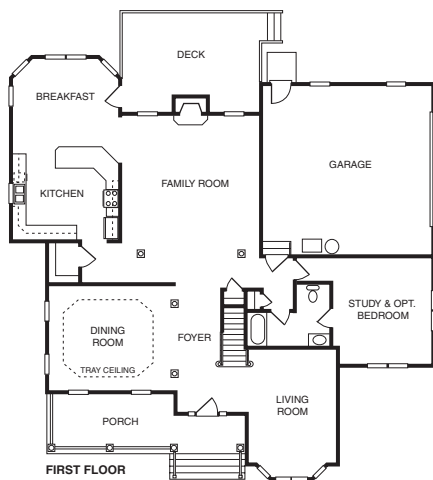
Copper accents and a country porch draw your attention to this charming home. The two-story foyer opens to a large formal dining room with columns. The kitchen opens to a breakfast area and family room. The study can be an optional bedroom. The second floor features 4 bedrooms and a balcony over the main entrance. Homes from the \$400s. This home will not be open during the Parade; please visit our sales center.

Directions: Route 288 to Route 360 West; go 4 miles to Otterdale Road; go right on Otterdale to Woolridge Road; right on Woolridge for .05 miles; turn right into Foxcreek, go straight to the fifth left to Prescotts Level. The Oakton will be on the left corner of Prescotts Level – Fieltan Trail.

Builder Contact: Sam Tarbona, (804) 965-9700

Agent Contact: Erika Virgulak, (804) 639-2207, Prospect Homes

www.prospecthomes.com



121 Ryan Homes
FoxCreek

\$640,990 | 5,073 sq. ft. | Chesterfield County

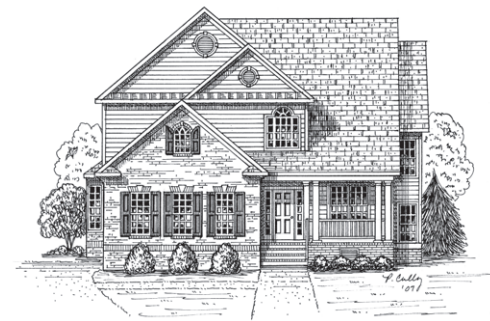
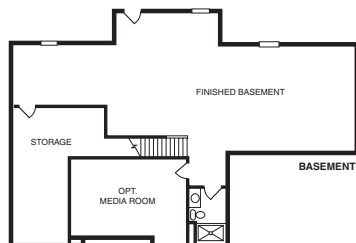
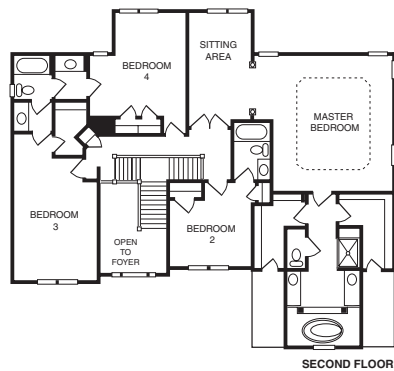
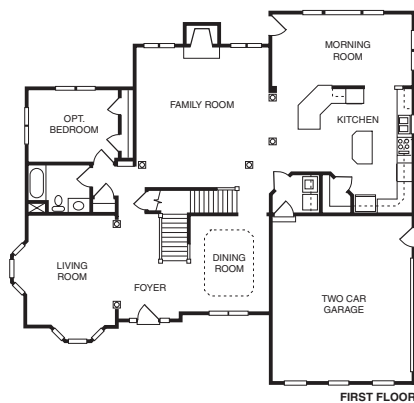
Elegant entry into soaring two-story foyer with split staircase offering formal living and dining rooms. The kitchen has a walk-in pantry and island. The study can be an optional first-floor bedroom with full bath. The walk-in closets and soaking tub make the owner's suite luxurious. Many additions, such as sitting room, third floor, morning room, basement or three-car garage. Homes starting in the \$410s. **F**

Directions: Take Route 76 (Powwhite Parkway) until it ends; go straight on Old Hundred Road for 1.7 miles to left on Watermill Parkway; go 4.2 miles (turns into Woolridge Road); go left on Fox Creek Crossing; go 0.2 miles to left on Walkers Chase. Model will be on the right.

Builder Contact: Ryan Homes, (804) 272-6013

Agent Contact: Tom Weir, (804) 739-7926, Ryan Homes

www.ryanhomes.com



122 StyleCraft Homes
FoxCreek

\$537,121 | 3,339 sq. ft. | Chesterfield County

The Wellsley plan offers 4 bedrooms and 4½ baths. The first floor features formal rooms, a gourmet kitchen and a two-story family room. Upstairs offers 3 bedrooms and a loft area overlooking the family room. Between the first and second floors is the owner's suite, offering privacy and separation from the other areas. Homes starting in the upper \$300s. **F**

Directions: Take 360 West to right on Otterdale Road; take Otterdale to a right on Woolridge Road; turn right into Fox Creek.

Builder Contact: Kevin Kirwan, (804) 440-5639

Agent Contact: Todd Wyngaard, (804) 595-0161, Greg Clarke, (804) 639-2344, StyleCraft Realty

www.stylecrafthomes.com

