



**135 Ryan Homes**  
Berkley Village at Charter Colony

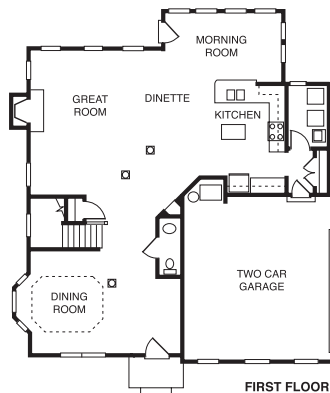
\$465,000 | 3,812 sq. ft. | Chesterfield County

Exciting design featuring an impressive two-story great room with gorgeous fireplace, which is open to the kitchen. Upstairs, the owner's suite with soaking tub is luxurious, and downstairs, the basement is the perfect place for entertaining. You can select an optional fourth bedroom or optional study. Optional finished third floor and morning room available. Two-car garage. Homes starting in the \$350s. **F**

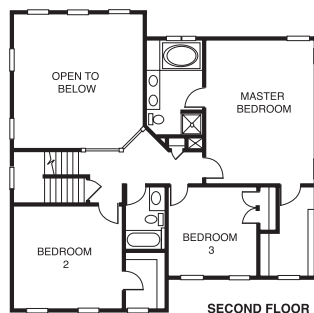
**Directions:** Take Route 60 West (Midlothian Turnpike), to left on Charter Colony Parkway; turn right at light on Woolridge Road; go 0.3 miles; turn right on Charter Park Drive; go 0.3 miles to right on Charter Park Lane; take immediate left on Charter Walk Place. Model is straight ahead.

**Builder Contact:** Ryan Homes, (804) 272-6013

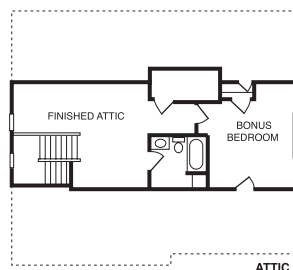
**Agent Contact:** Erin Findlay, (804) 379-0720, Ryan Homes  
[www.ryanhomes.com](http://www.ryanhomes.com)



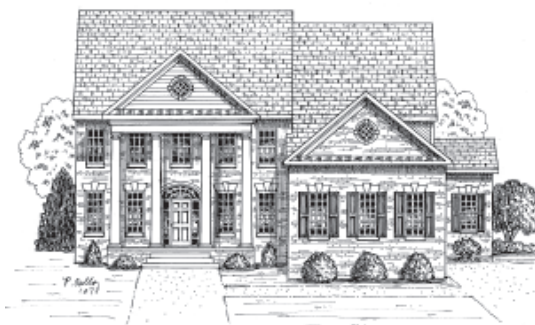
FIRST FLOOR



SECOND FLOOR



ATTIC



**136 Boone Homes Inc.**  
Haywood Village at Charter Colony

\$549,950 | 4,105 sq. ft. | Chesterfield County

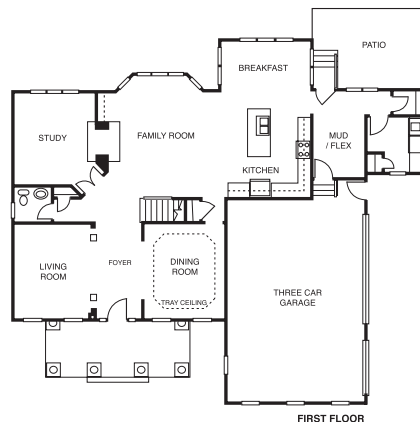
New luxury homes in an ideally located old-fashioned community close to Route 288, Sycamore Square and the Village of Midlothian. Neighborhood pool, tennis and clubhouse. Luxury homes with porches, first-floor master suite, office, mud room and flexible space. **F**

**Directions:** From Route 288, take the Woolridge Road Exit and go 0.3 miles and turn left onto Charter Park Drive; go 0.2 miles and turn right onto Charter Landing Drive; go up the hill directly into the entrance of Haywood Village. The model is straight ahead on the right.

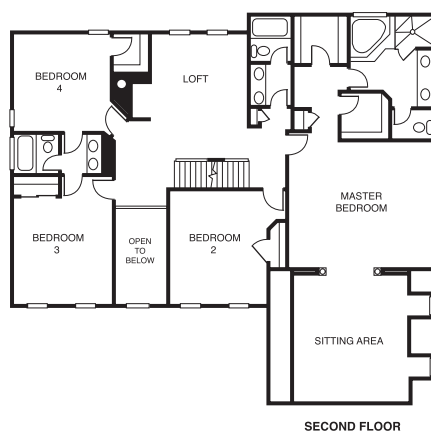
**Builder Contact:** Chris Parks, (804) 218-7760

**Agent Contact:** Lorraine Weitzel, (804) 708-5128, Boone Homes Realty Inc.

[www.boonehomes.net](http://www.boonehomes.net)



FIRST FLOOR



SECOND FLOOR



**137 Bristol Village LLC**  
Bristol Village at Charter Colony

\$219,950 | 1,213 sq. ft. | Chesterfield County

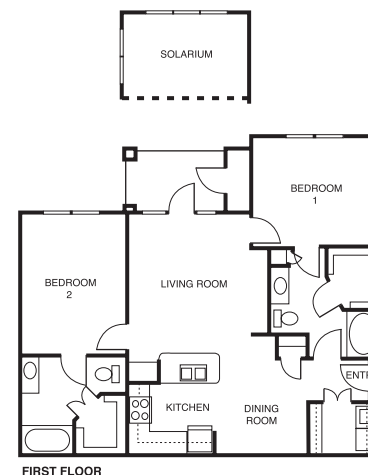
Modern luxury condominiums feature fitness center, Internet café, clubhouse and pool. Garden and loft-style floor plan. **F**

**Directions:** From Route 288, take the Woolridge Road Exit toward Charter Colony Parkway; turn right after second traffic light onto Coalfield Road; take an immediate right onto Bristol Village Drive into Bristol Village; turn left to Building 1. The model is unit 105 on the right.

**Builder Contact:** Kate Golden, (804) 335-6927

**Agent Contact:** Hometown Realty, (804) 594-2535

[www.bristolvillageatchartercolony.com](http://www.bristolvillageatchartercolony.com)



FIRST FLOOR