



138 Boone Homes Inc.
Courtyard Villas of Tarrington

\$672,950 | 3,712 sq. ft. | Chesterfield County

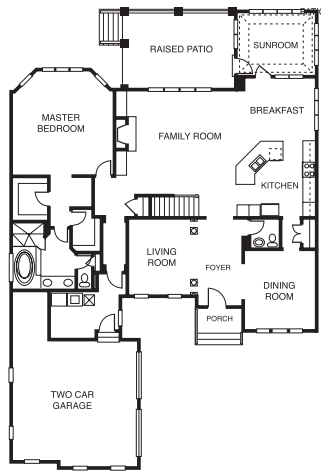
New luxury courtyard homes from the \$600s in a wooded community. Neighborhood pool and clubhouse. Close to Route 288, The Shops at Bellegrade, Sycamore Square and the Village of Midlothian. All-brick homes, garages, first-floor master suites and bedrooms, office, raised brick verandas. Exteriors maintained. **F**

Directions: From Route 288, take the Robious Road (Route 711) Exit; turn east on Robious Road and go 3 miles to Ashwell Drive; turn left into Tarrington; follow Ashwell Drive to second roundabout; turn right onto Ashwell Drive; follow Ashwell to Caddington Drive; follow Caddington to model.

Builder Contact: Chris Parks, (804) 218-7760

Agent Contact: Realty Ventures Group Inc., (804) 897-9188

www.boonehomes.net



FIRST FLOOR



SECOND FLOOR



139 Boone Homes Inc.
Estate Homes of Tarrington

\$865,950 | 4,984 sq. ft. | Chesterfield County

New luxury estate homes from the \$600s in a wooded community. Neighborhood pool and clubhouse. Close to Route 288, The Shops at Bellegrade, Sycamore Square and the Village of Midlothian. Private wooded homesites, porches, his and her master suites, offices, mud rooms, upstairs dens and luxurious kitchens. **F**

Directions: From Route 288, take the Robious Road (Route 711) Exit; turn east on Robious Road and go 3 miles to Ashwell Drive; turn left into Tarrington; follow Ashwell Drive and turn left onto Edmonton Drive; follow Edmonton to model.

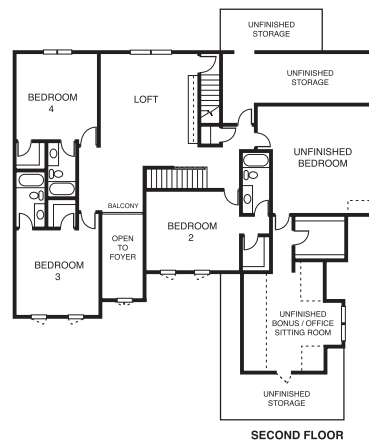
Builder Contact: Chris Parks, (804) 218-7760

Agent Contact: Realty Ventures Group Inc., (804) 897-9188

www.boonehomes.net



FIRST FLOOR



SECOND FLOOR



140 Dumont Classic Homes Co.
Tarrington on the James

\$1,134,000 | 6,392 sq. ft. | Chesterfield County

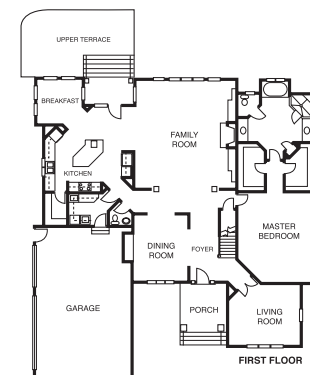
The Dumont Team embraces its clients' changing needs with this spectacular blend of Arts and Crafts design with a focus on outdoor living. The Tiffany II boasts 20-foot ceilings, stone fireplace, Old World trim, state-of-the-art gourmet kitchen and a walk-out basement leading to double patios with outdoor kitchen and fireplace.

Directions: From Route 288 North, take Huguenot Trail/Robious Road Exit; turn left at stoplight; turn left at Ashwell Drive; left on Sherfield Drive; right on Welby Drive to corner of Welby Drive and Welby Place.

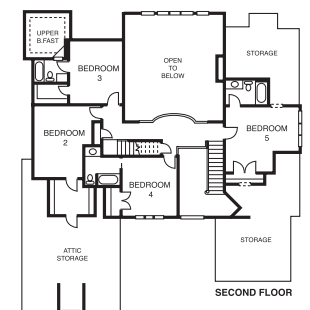
Builder Contact: Mike Dumont, (804) 379-9141

Agent Contact: Lee Rousseau, (804) 897-9188, Realty Ventures Group

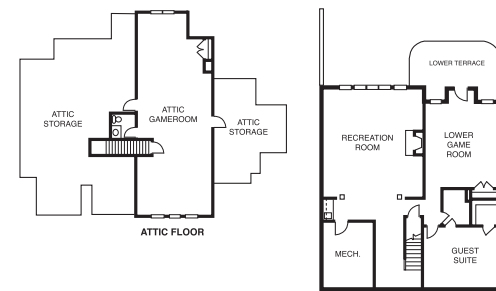
www.dumontclassichomes.com



FIRST FLOOR



SECOND FLOOR



BASEMENT