



141 Homeplaces Ltd.
Tarrington

\$650,000 | 3,150± sq. ft. | Chesterfield County

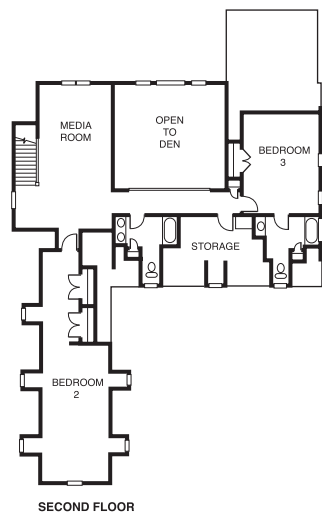
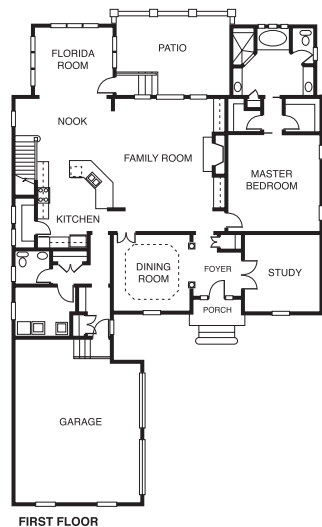
This hilltop manor offers panoramic views across the banks of the James River. This story-and-a-half home has exquisite details in architectural elements of an exterior water table, operable shutters and detailed cornice work. The interior features marble flooring, granite countertops, extensive moldings, coffered ceiling, two-story family room and copper farmhouse sink. In the backyard, a formal bluestone patio and boxwood parterres complete the experience. **F**

Directions: From Route 288, go east on Robious Road; turn left into Tarrington on Ashwell Drive; at clubhouse, turn right onto Ashwell Drive; take first left onto Bircham Loop. The model is on the left.

Builder Contact: Tom Kellam, (804) 740-8100

Agent Contact: Lee Rousseau, (804) 897-9188, Realty Ventures Group Inc.

www.homeplaces.com



142 Orleans Homebuilders
Tarrington

\$1,217,500 | 8,011 sq. ft. | Chesterfield County

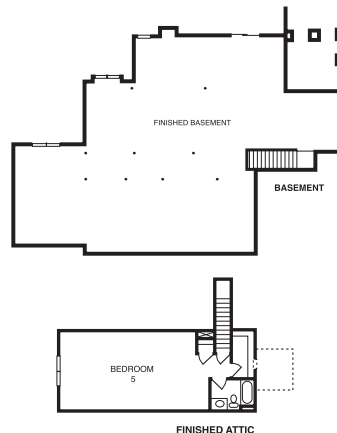
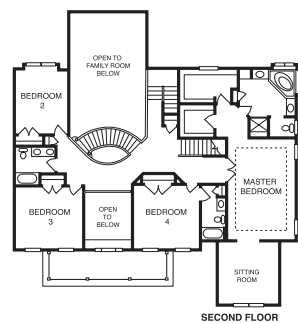
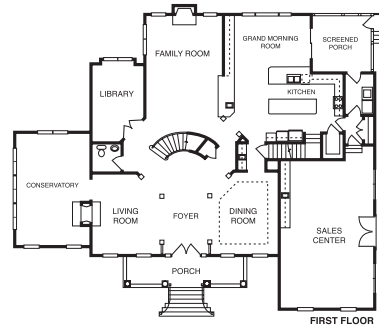
The Bradford Grand first floor features a circular staircase, open foyer, see-through fireplace and oversize conservatory. A gourmet kitchen with walk-in pantry and a morning room, an extended family room, three-car garage and screened porch are also features. The second and third floors are finished with 3 bedrooms and master suite with sitting room. **F**

Directions: Huguenot Road west onto Robious Road; turn right into Tarrington, straight past clubhouse; turn left. Model is on the right.

Builder Contact: Betty O'Neill, (804) 323-3100

Agent Contact: Bill Correll, Bill Haynie, Lee Rousseau, (804) 897-9188, Realty Ventures

www.orleanshomes.com



143 Napier Signature Homes Inc.
Tarrington

\$969,950 | 5,024 sq. ft. | Chesterfield County

This home with five bedrooms and 4.5 baths is located near a quiet cul-de-sac. A two-story foyer reveals a curved balcony with spacious rooms, hardwood floors, extensive trim and moldings. The kitchen has stainless steel appliances and a gas cook top. Features include a first-floor office, vaulted sunroom, plasma TV above the family room fireplace and a finished third floor.

Directions: Robious Road to Ashwell Drive; continue on Ashwell just past the community center; turn left on Sherfield Road, right on Welby Drive; right on Hanwell Court. The house is on the left.

Builder Contact: C. Richard Napier, (804) 403-3101

Agent Contact: Lee Rousseau, (804) 897-9188, Realty Ventures Group Inc.

www.napiersignaturehomes.com

