



**150 Orleans Homebuilders**  
Tilman's Farm

\$1,125,000 | 6,554 sq. ft. | Powhatan

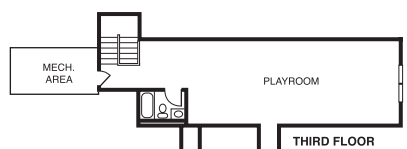
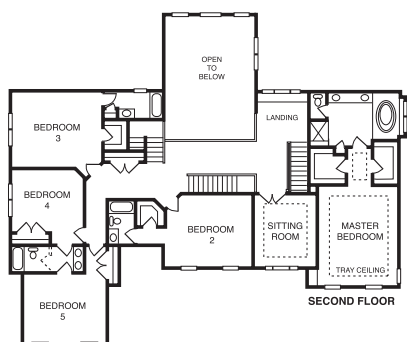
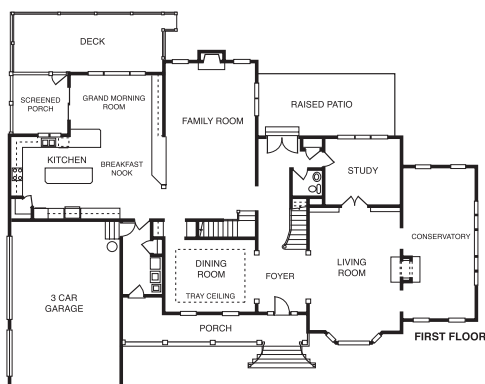
The Vanderbilt, on a large farmette-type lot, has oversize rooms, multiple fireplaces, conservatory, screened porch and oversize deck. The oversize master suite, 4 other bedrooms and finished third floor will provide ample space for family and guests. **F**

**Directions:** Take Route 60 west 15 miles from Chesterfield Town Center; turn right on Route 522; go 4.3 miles to Tilman's Farm on the right. Model home is straight ahead on the corner.

**Builder Contact:** Betty O'Neill, (804) 323-3100

**Agent Contact:** Jim Simpson, (804) 598-0027, Realty Ventures

[www.orleanshomes.com](http://www.orleanshomes.com)



**151 Holman Homes Inc.**  
Greywalls

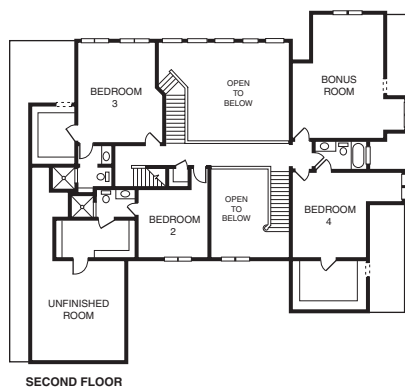
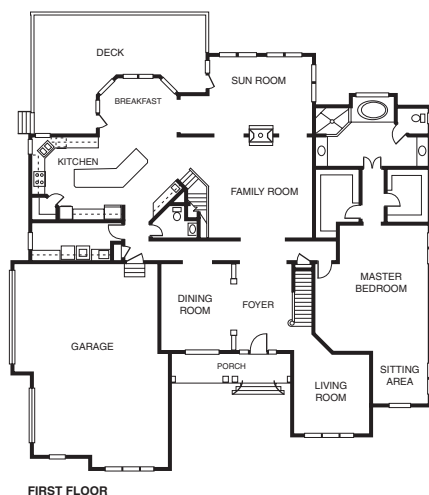
\$1,295,000 | 5,600+ sq. ft. | Powhatan

The Ivystone, an all-brick home located on two wooded acres, has master down with fireplace and his-and-her closets, his-and-her vanities, two-story stone fireplace open between family and Florida rooms, 3 bedrooms up, each with bath, gourmet kitchen, granite counters, stainless appliances, home theater, surround sound, central vac, security system and paved patio with outdoor kitchen.

**Directions:** From Route 288, go south on Huguenot Trail Road (Route 711); turn right; go about 8 miles to left into Greywalls; follow Greywalls Drive; turn left onto Shaunessey Drive. Home is on the left.

**Builder Contact:** Gene Holman, (804) 784-9073

**Agent Contact:** Lummie Jones, (804) 598-7700, Napier Realtors ERA



**152 Avent Homes Inc.**  
Aston

Approx. \$725,000 | 4,417 sq. ft. | Powhatan

This Glenn German, AIA, design features one-floor living at its best. The living room and entry have cathedral ceilings while the remaining spaces have 10-foot ceilings. The master bedroom suite is located away from the spare office/bedrooms. Generous recreation space in the basement has a perfect guest suite. Additional hobby/media space in room over the garage. (This home will not be open during the Parade; please visit in November 2007.)

**Directions:** From Route 288, go west on Huguenot Trail Road (Route 711); go about 10 miles and turn right onto Aston Trail; go 1/3 mile and turn right onto Archers Hill Road and go 1/4 mile and turn left onto Archer Ridge; go 1/3 mile to Lot 22 on the right just before a cul-de-sac.

**Builder Contact:** Arthur E. Avent Jr., (804) 744-1122

**Agent Contact:**

[www.aventhomes.com](http://www.aventhomes.com)

