



Commonwealth Properties
123 Creek's Edge at Stony Point

\$324,950 | 1,984 sq. ft. | Richmond

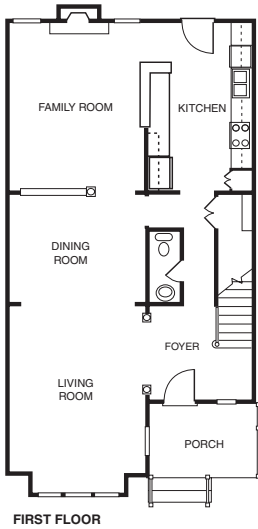
Our new Arts and Crafts style homes offer a variety of floor plans with garages and luxurious detailing. This private, gated neighborhood is nestled in the woods and only a three-minute stroll to Stony Point Fashion Park. First-floor master bedrooms are available. Homes starting at \$279,950. **F**

Directions: From Chippenham Parkway, take the Stony Point Parkway Exit; go past Stony Point Fashion Park; turn onto Creek's Crossing Boulevard; go straight through gates and across bridge, and 9313 Creek's Crossing Blvd. is the seventh town home on the right.

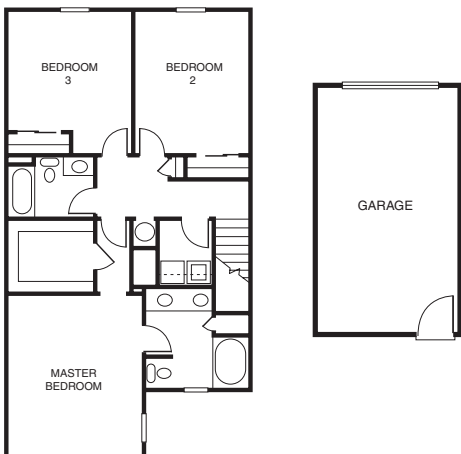
Builder Contact: Steve Middleton, (804) 327-9500

Agent Contact: Larry Cohen, (804) 330-0222, Gray Co. Realty

www.creeksedgehomes.com



FIRST FLOOR



SECOND FLOOR



Wilton Talon Group
124 James River Commons

\$533,734 | 3,983 sq. ft. | Richmond

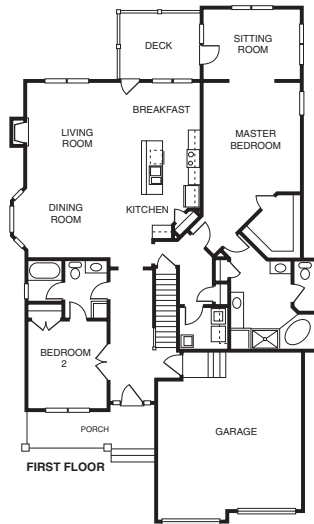
Our low-maintenance homes and community are conveniently located near Richmond's best amenities. Surround yourself with standard luxury features such as wood flooring, granite tops, 42" cabinets, crown molding, and 9-foot ceilings. The Ashford floor plan is designed for one-story living. Main level includes a first-floor master suite with bay window, and a transitional kitchen. Finished basement with stone exteriors and Hardiplank. Homes starting in the upper \$300s. **F**

Directions: From Chippenham Parkway, take the VA-147/Huguenot Road South Exit. Entrance to James River Commons community is immediately on right. The model will be the first home on the left.

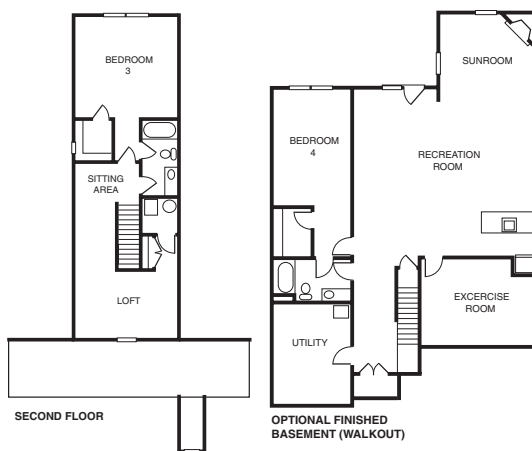
Builder Contact: John R. Schwab, (804) 673-5650

Agent Contact: Parker King, (804) 323-0292

www.jamesrivercommons.com



FIRST FLOOR



SECOND FLOOR

OPTIONAL FINISHED BASEMENT (WALKOUT)



Greenstone Construction Inc.
125 Adams Park

\$299,960 | 2,942 sq. ft. | Richmond

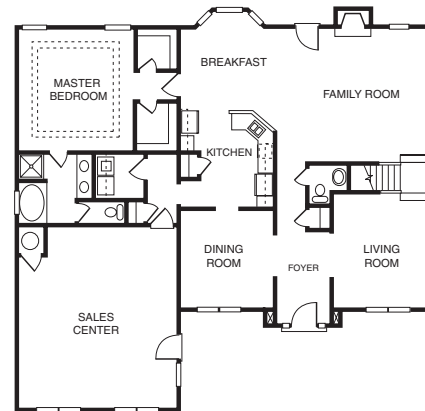
The Walnut II features a first-floor master suite, an airy open foyer and an upstairs loft. The base price starts at \$259,990. Adams Park is just 10 miles from downtown, 20 miles from Fort Lee and 10 miles from the airport. Adams Park overlooks Falling Creek reservoir. Homes start at \$199,990. **F**

Directions: Take Chippenham Parkway to Ironbridge Road; go north toward Richmond approximately 1/2 mile. After you cross Falling Creek reservoir; take the first left. Home is the second house on the left.

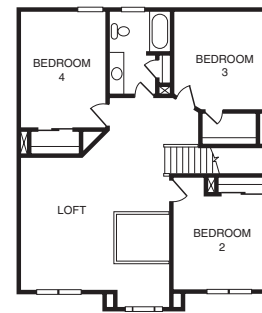
Builder Contact: Robert Mortuika, (804) 874-3713

Agent Contact: Gail Atkins, (804) 346-1000, ext. 324, gail@easylivinghomes.com

www.easylivinghomes.com



FIRST FLOOR



SECOND FLOOR